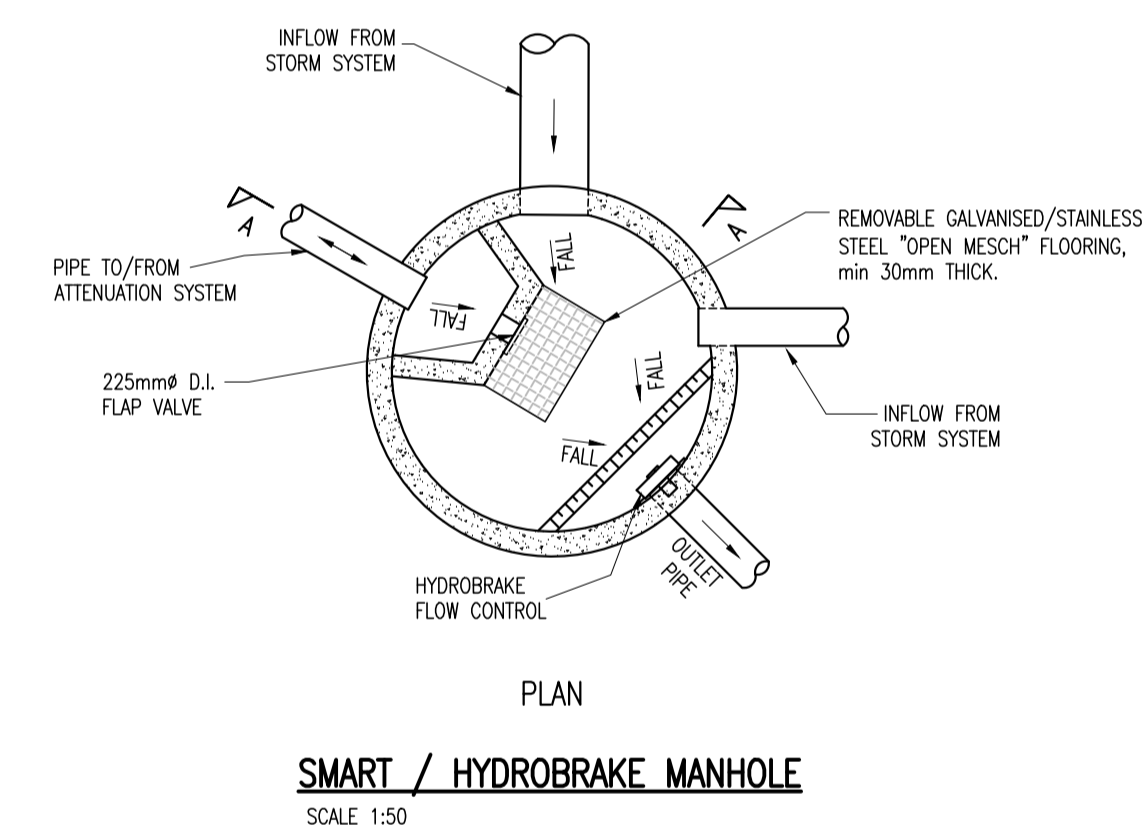
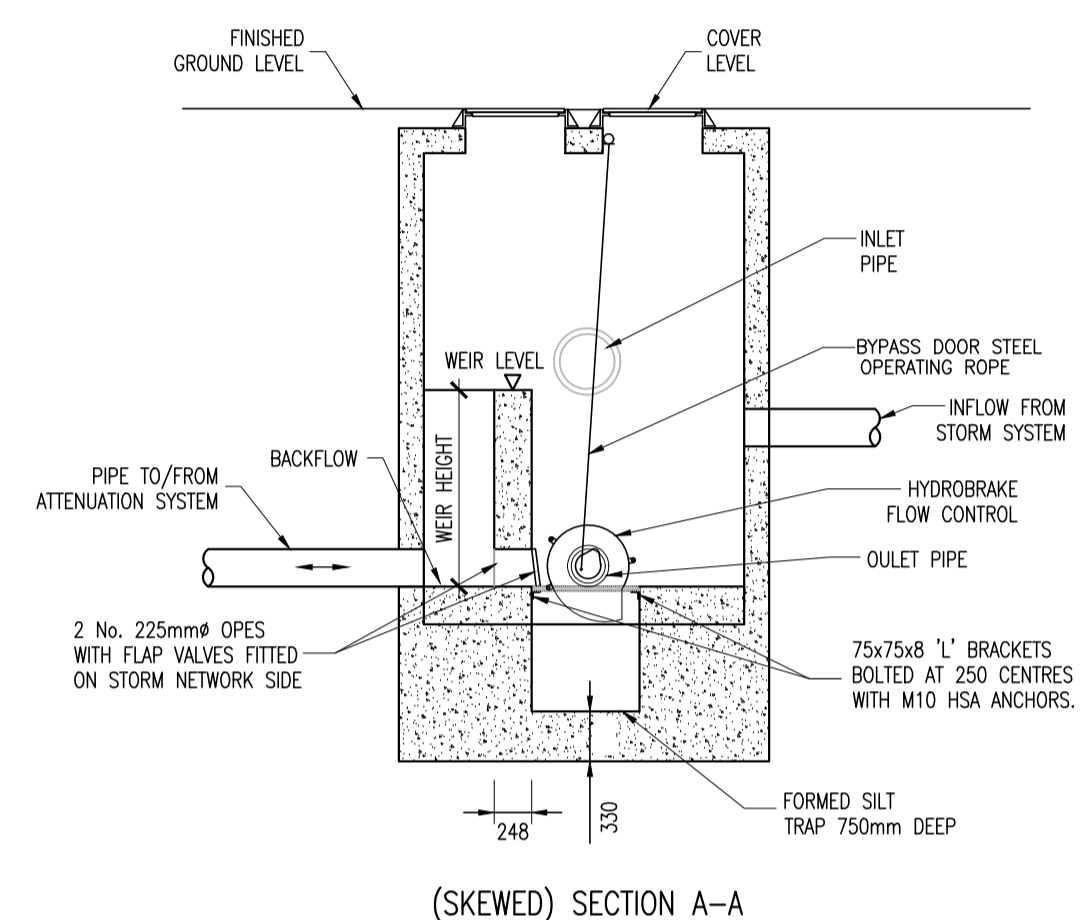
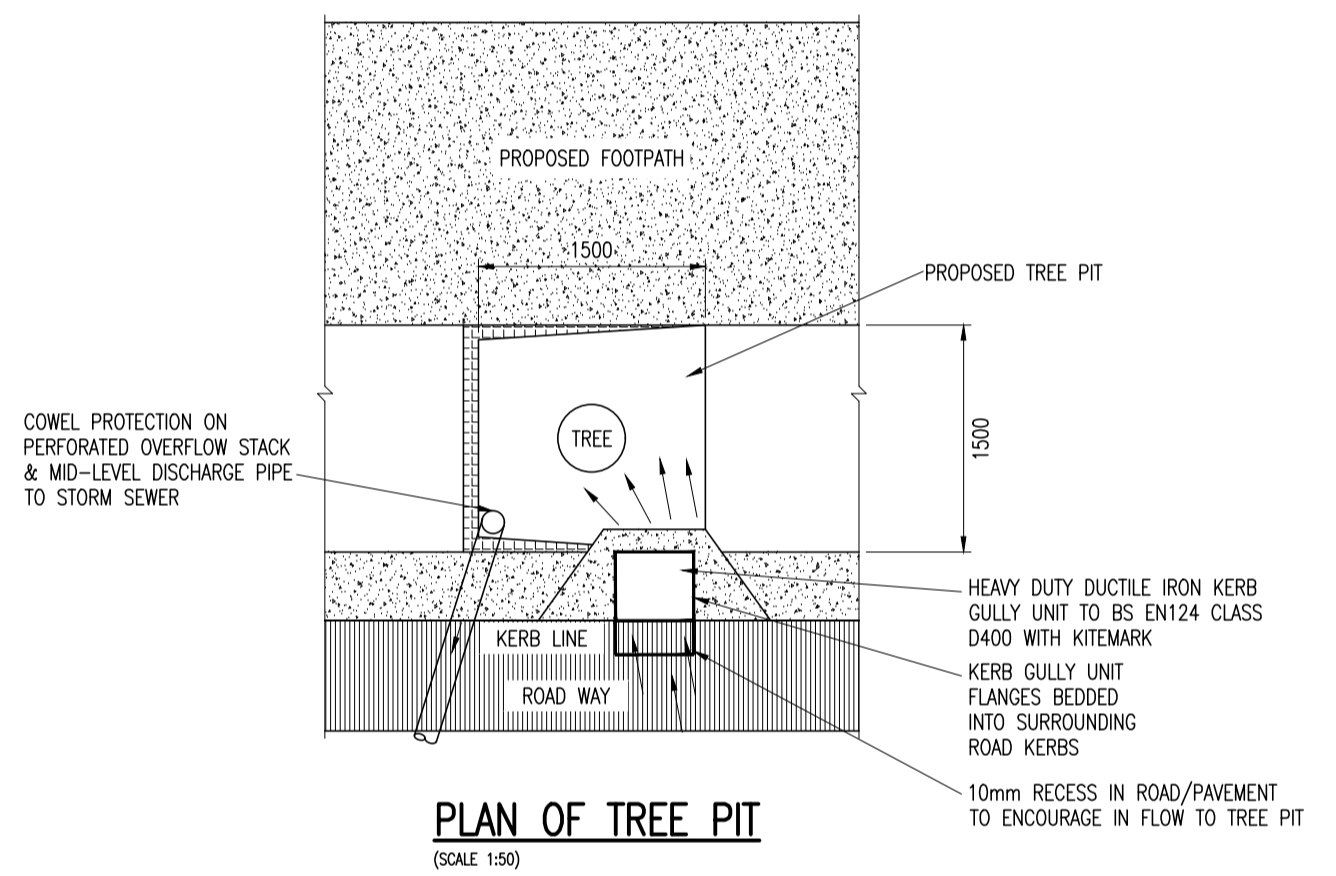
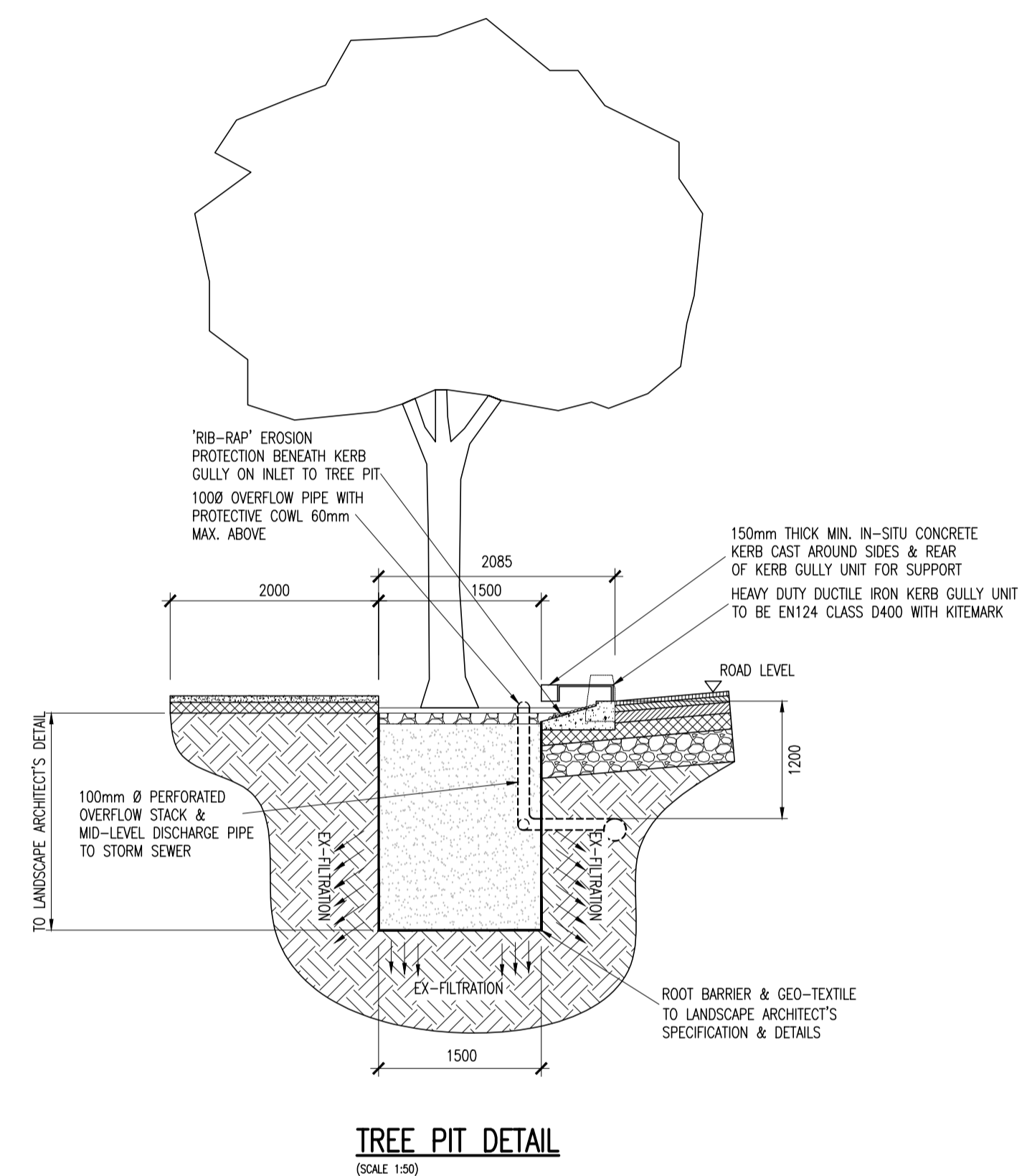


NOTES:



P02	11/02/22	ISSUED FOR PLANNING	RSP	LMCL
P01	15/06/21	ISSUED FOR PRE-PLANNING	KGO	LMCL
rev	date	description	by	chkd.
		A - Approved		
		B - Approved with comments		
		C - Do not use		

client approval

suitability	issue purpose
S2 - INFORMATION	PLANNING

DBFL Consulting Engineers
Civil, Structural & Transportation Engineering
www.dbfl.ie

DUBLIN OFFICE: Ormond House, Upper Ormond Quay, Dublin 7, D07 W704
PHONE +353 1 450 4000

CORK OFFICE: 14 South Mall, Cork, T12 CT91
PHONE +353 (0) 21 2254538

WATERFORD OFFICE: Suite 10 The Arkun, Maristara Gate, Canossa Street, Waterford, X91 W028
PHONE +353 51 309 500

project ref.
PROPOSED RESIDENTIAL DEVELOPMENT, LUSK, COUNTY DUBLIN

drawing title
STANDARD DETAILS SHEET 6 OF 7

client
DWYER NOLAN DEVELOPMENTS

designed by	author	scale	sheet size
LMCL	KGO	AS SHOWN	A1
drawing no.			revision
170006-DBFL-Z0-SP-DR-C-5007			P02