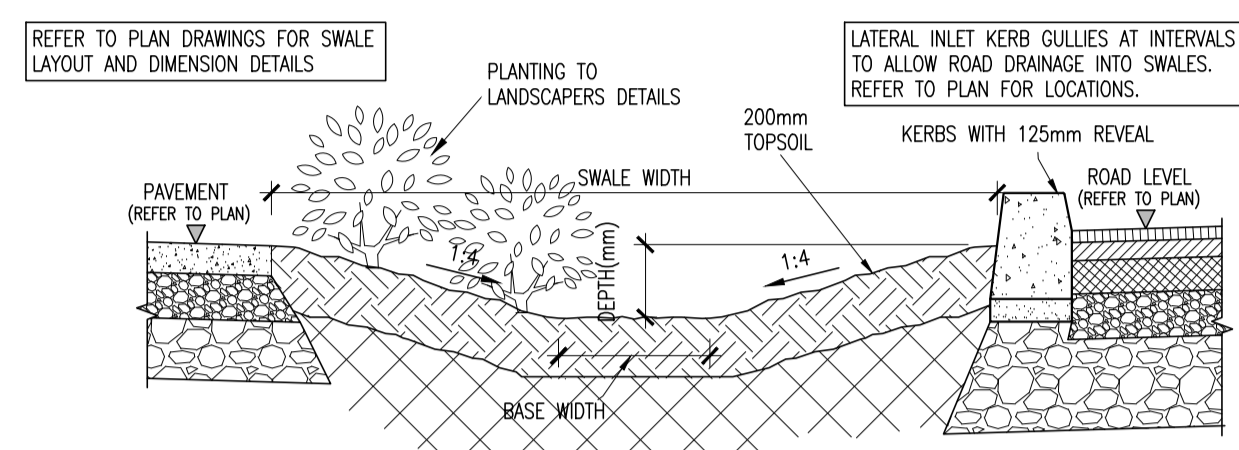
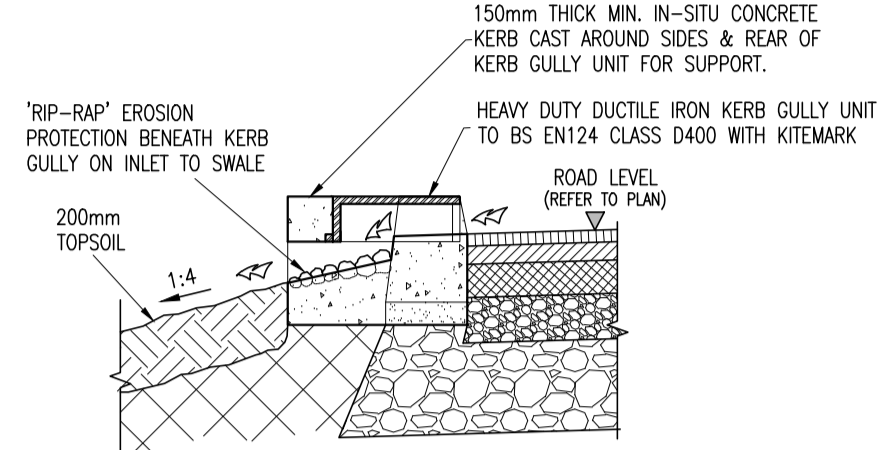


- NOTES:
- C20/25 CONCRETE TO HAVE A MINIMUM CEMENT CONTENT OF 260kg/m<sup>3</sup>, MAXIMUM WATER/CEMENT RATIO OF 0.65 AND SLUMP CLASS S2.
  - C25/30 CONCRETE TO HAVE A MINIMUM CEMENT CONTENT OF 280kg/m<sup>3</sup>, MAXIMUM WATER/CEMENT RATIO OF 0.65 AND SLUMP CLASS S2.
  - C40/50 CONCRETE TO HAVE A MINIMUM CEMENT CONTENT OF 400kg/m<sup>3</sup>, MAXIMUM WATER/CEMENT RATIO OF 0.45 AND SLUMP CLASS S3.
  - WHERE CLASS 6F1/6F2 CAPPING MATERIAL IS PROPOSED WITHIN 500mm OF CONCRETE OR STEEL, CLASS 6N TO BE USED INSTEAD.
  - WHERE FOOTPATHS ARE LOCATED ADJACENT TO ROADS, C40/50 CONCRETE TO BE USED. ALTERNATIVELY, FOOTPATHS LOCATED BEHIND VERGES C25/30 CONCRETE MAY BE USED.

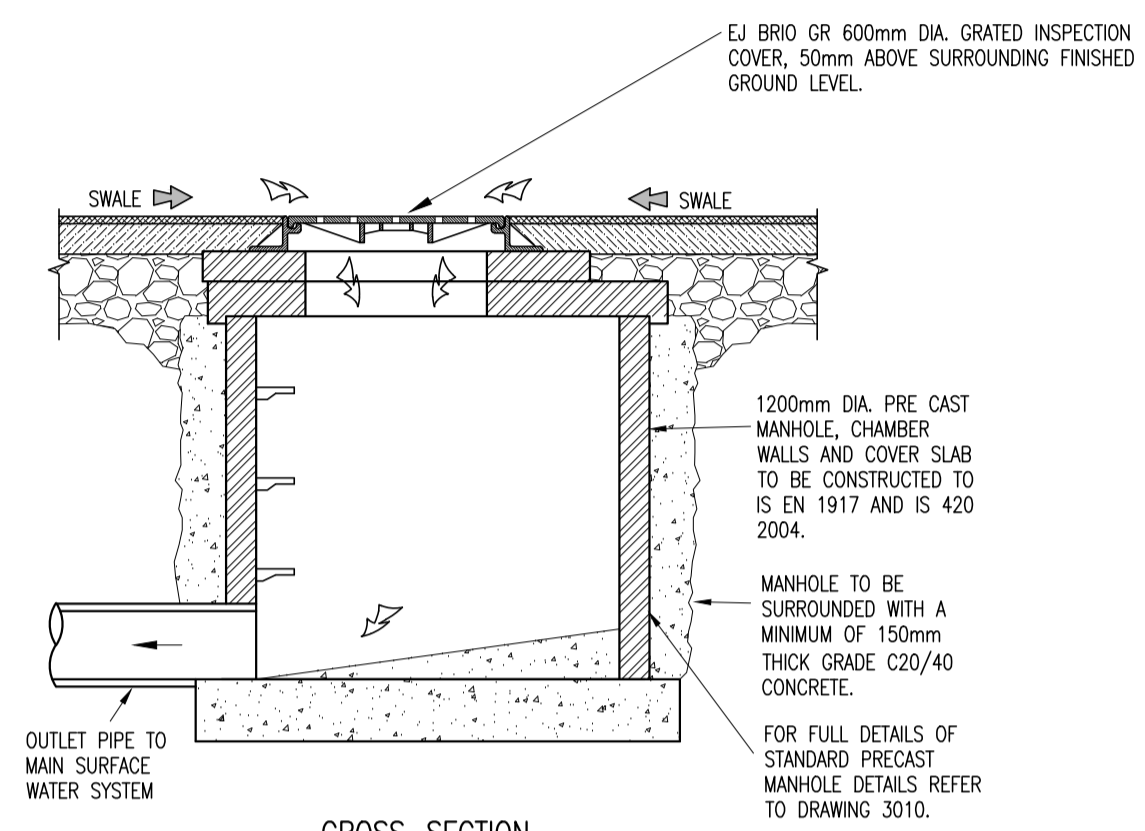
NOTE:  
 ALL WORKS & SPECIFICATIONS TO BE UNDERTAKEN IN ACCORDANCE WITH  
 • TII SPECIFICATION FOR ROADWORKS  
 • GREATER DUBLIN CODE OF PRACTICE FOR DRAINAGE WORKS  
 • RECOMMENDATIONS FOR SITE DEVELOPMENT WORKS



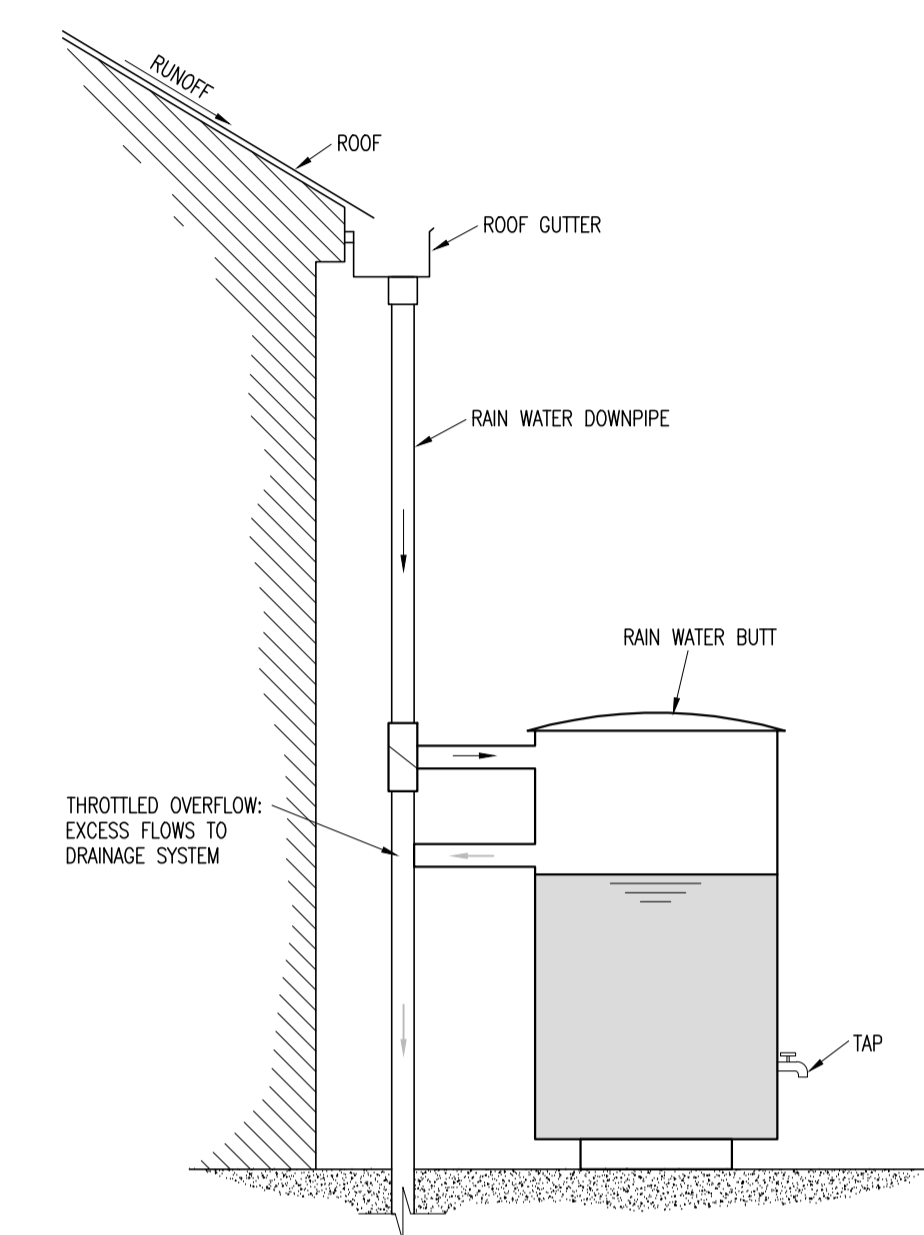
**WET SWALE CROSS-SECTION**  
 [FOR ROAD DRAINAGE]  
 SCALE: NTS



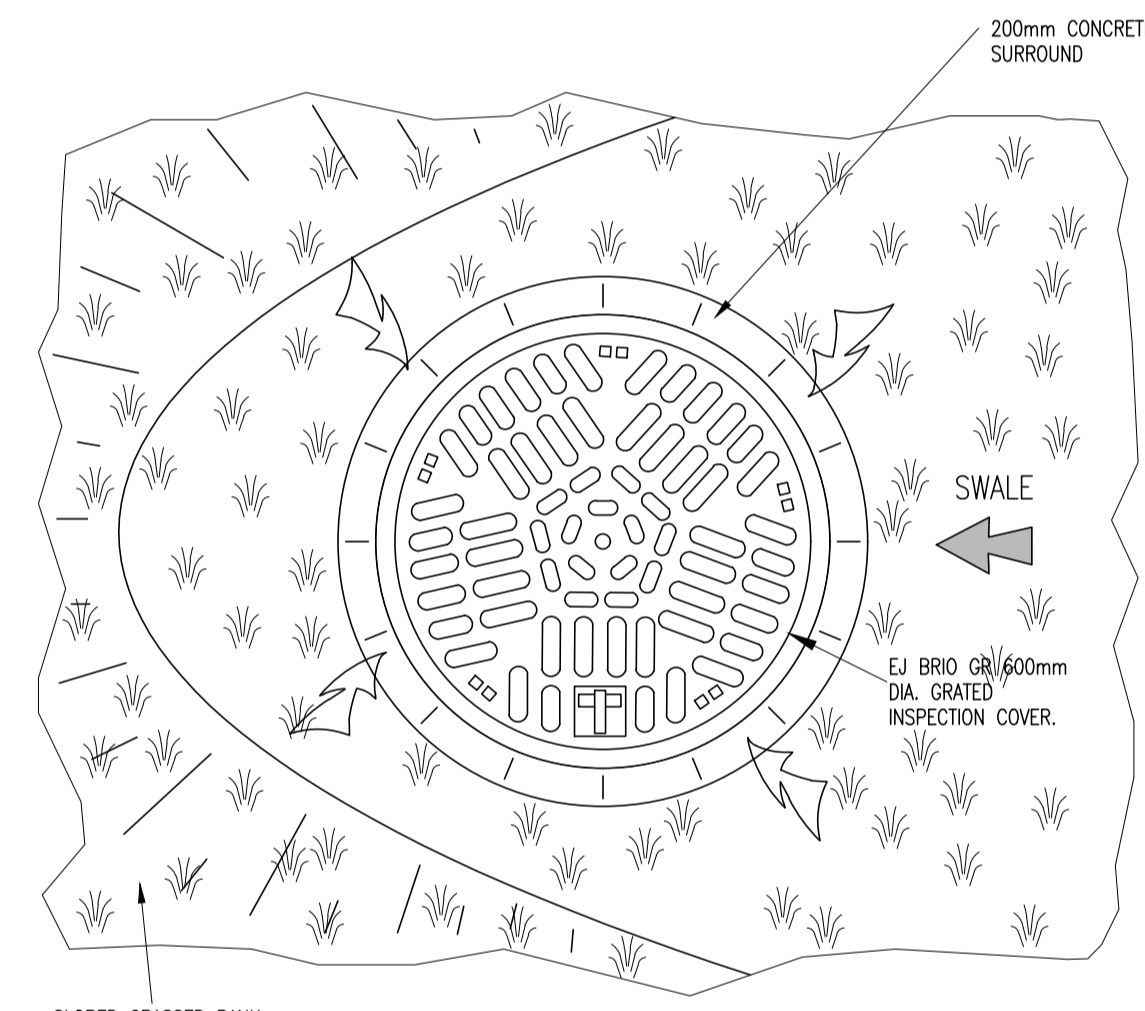
**LATERAL INLET KERB GULLY TO SWALE CROSS-SECTION**  
 [FOR ROAD DRAINAGE]  
 SCALE: NTS



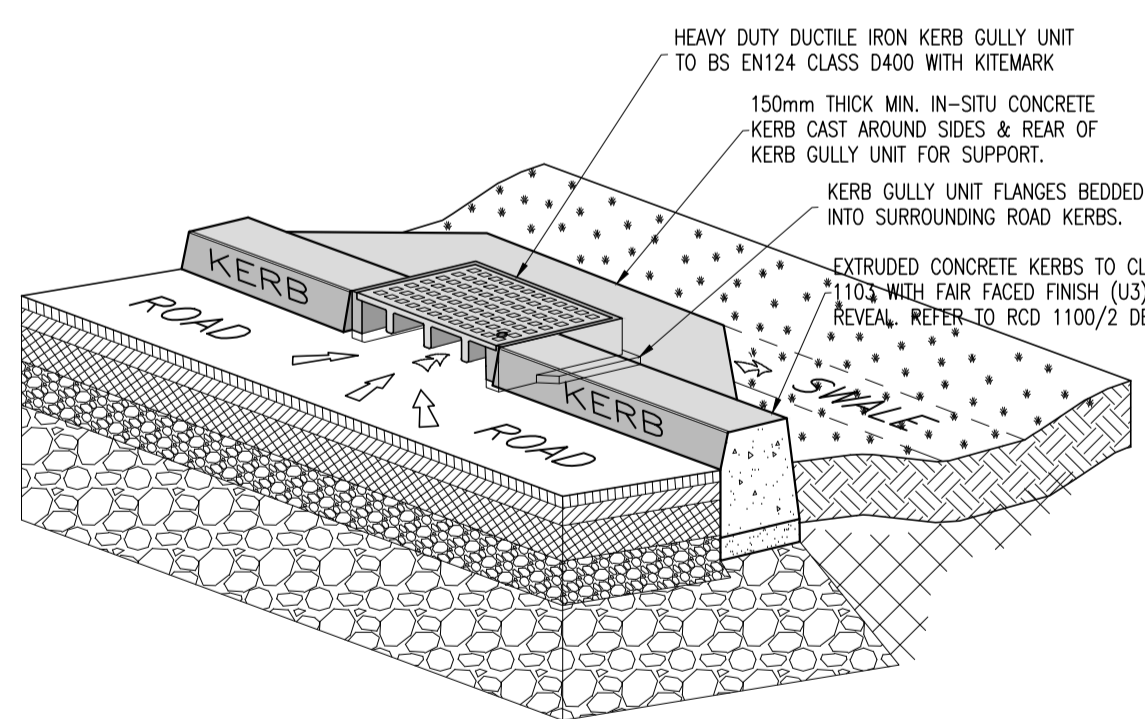
**GRADED MANHOLE INLET CHAMBER**  
 [FOR ROAD DRAINAGE]  
 SCALE: N.T.S.



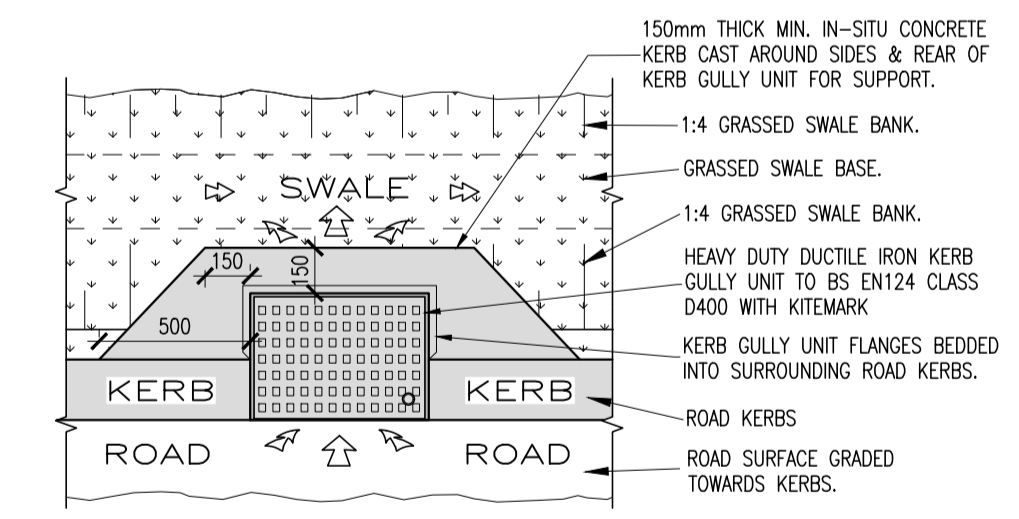
**TYPICAL WATER BUTT DETAIL**  
 SCALE: NTS



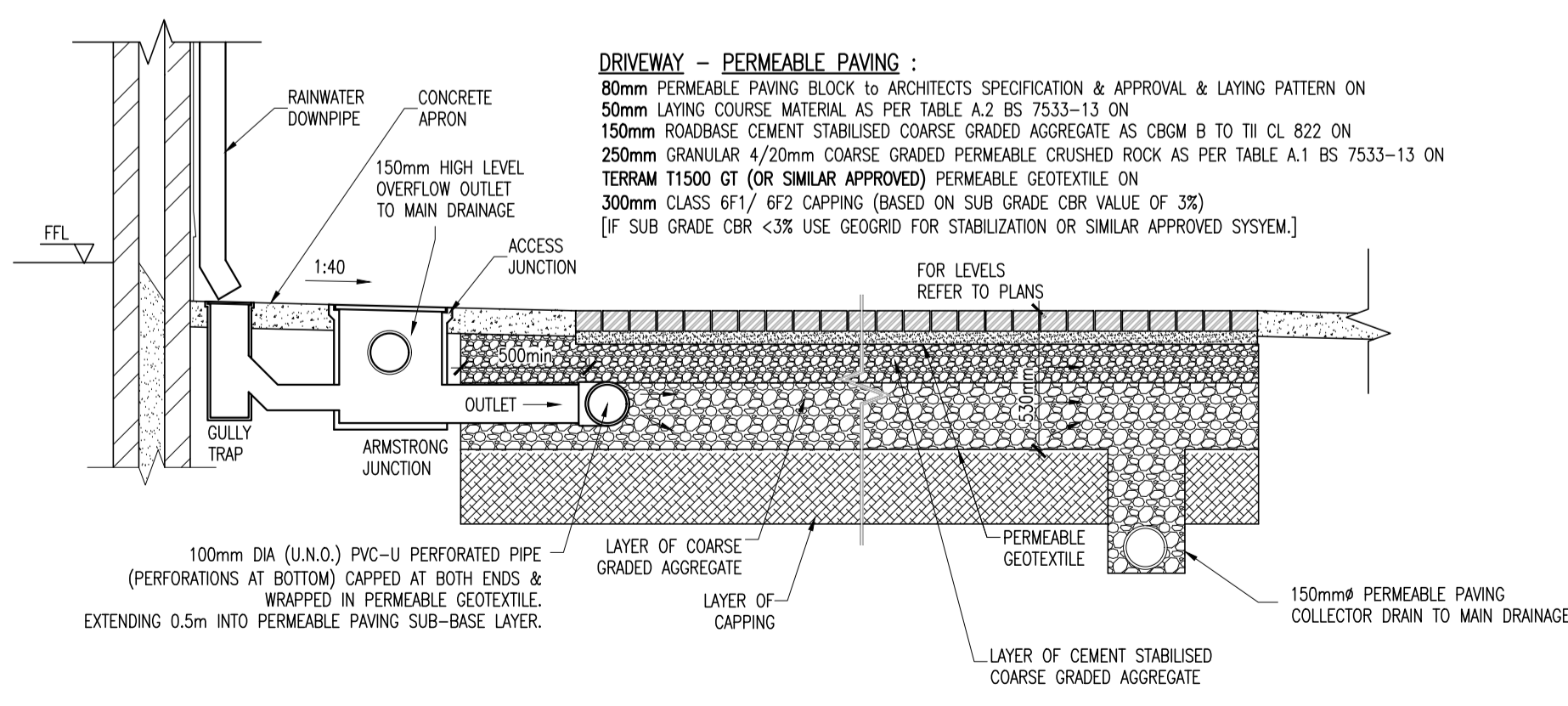
**PLAN**  
 SCALE: 1:10



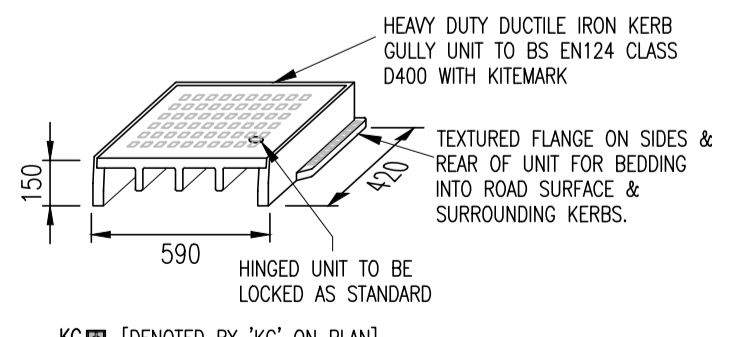
**LATERAL INLET KERB GULLY SCHEMATIC**  
 [FOR ROAD DRAINAGE]  
 SCALE: NTS



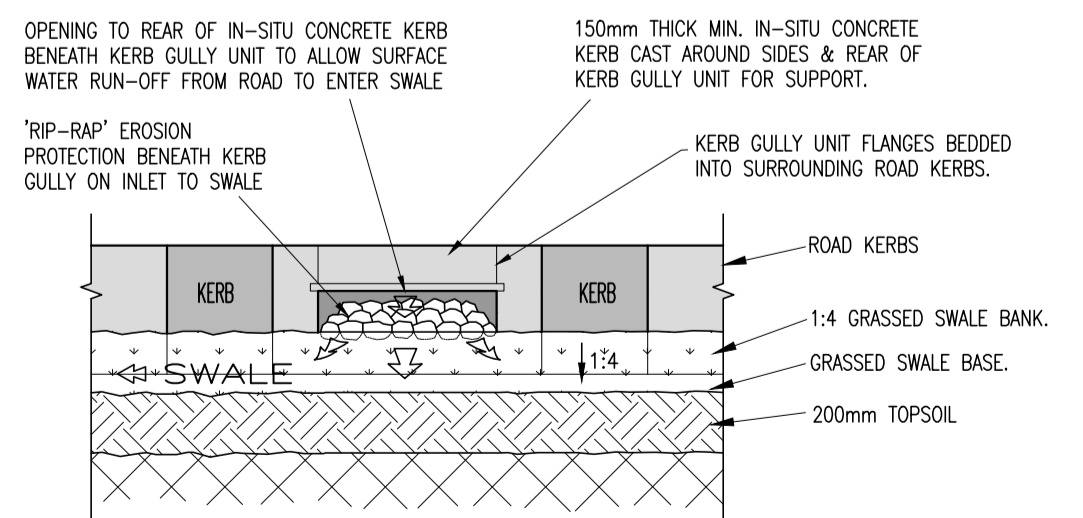
**LATERAL INLET KERB GULLY PLAN**  
 [FOR ROAD DRAINAGE]  
 SCALE: NTS



**TYPICAL HOUSE DRAINAGE & PARTIAL INFILTRATION PERMEABLE PAVING SECTION**  
 SCALE: NTS



**LATERAL INLET KERB GULLY DETAIL**  
 [LOCATED ALONG KERBLINES TO ALLOW ROAD SURFACE WATER RUN-OFF INTO SWALES]  
 SCALE: NTS



**LATERAL INLET KERB GULLY - REAR ELEVATION**  
 [FOR ROAD DRAINAGE]  
 SCALE: NTS

P02	11/02/22	ISSUED FOR PLANNING	RSP	LM/LC
P01	15/06/21	ISSUED FOR PRE-PLANNING	KGO	LM/LC
rev	date	description	by	chkd.
client approval		A - Approved		
		B - Approved with comments		
		C - Do not use		

DBFL Consulting Engineers  
 Civil, Structural & Transportation Engineering  
 www.dbfl.ie

DUBLIN OFFICE: Ormond House, Upper Ormond Quay, Dublin 7, D07 W704  
 PHONE: +353 1 400 4000

CORK OFFICE: 14 South Mall, Cork, T12 CT91  
 PHONE: +353 (0) 21 2204538

WATERFORD OFFICE: Sub 10 The Arkun, Waterfront, Waterford, X91 W028  
 PHONE: +353 51 309 500

project ref:  
**PROPOSED RESIDENTIAL DEVELOPMENT, LUSK, COUNTY DUBLIN**

drawing title  
**STANDARD DETAILS SHEET 5 OF 7**

client  
**DWYER NOLAN DEVELOPMENTS**

designed by	author	scale	sheet size
LM/LC	KGO	AS SHOWN	A1
drawing no.			revision
170006-DBFL-ZO-SP-DR-C-5006			P02