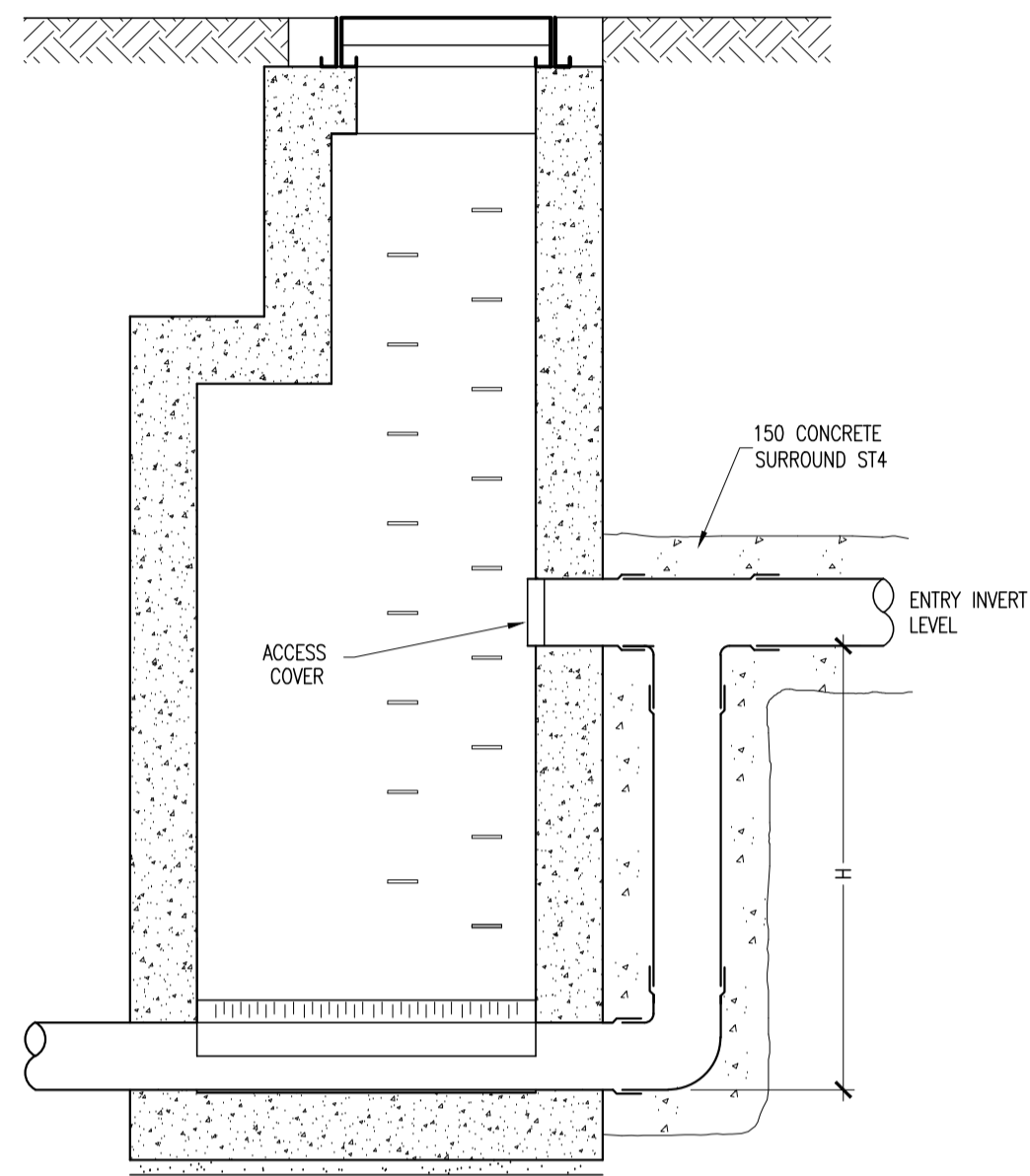
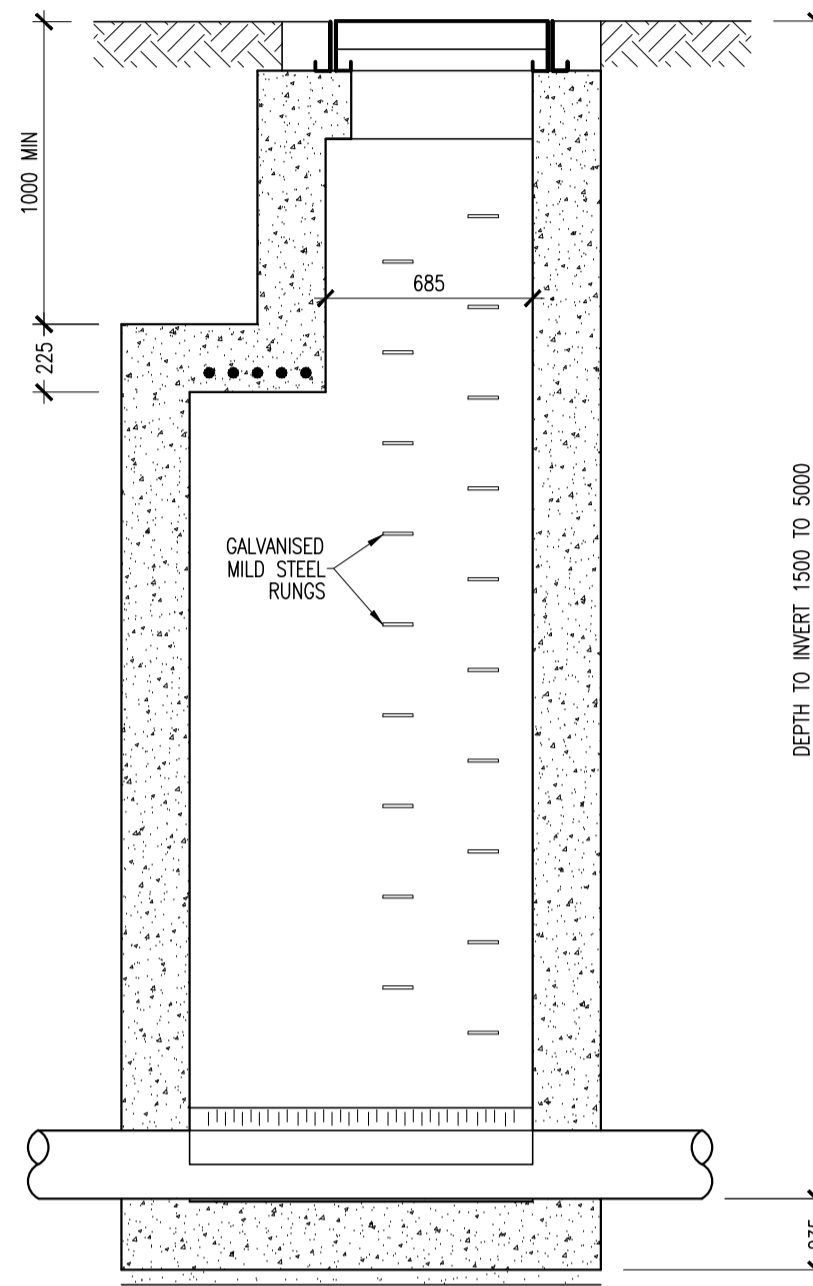


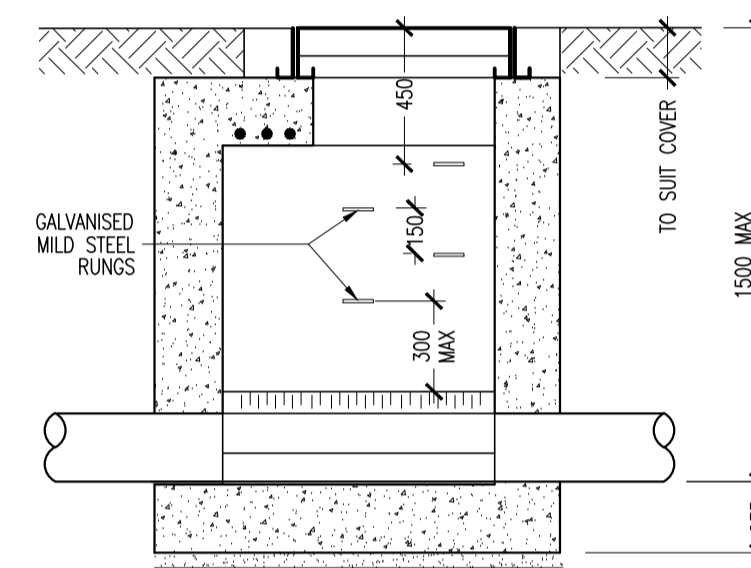
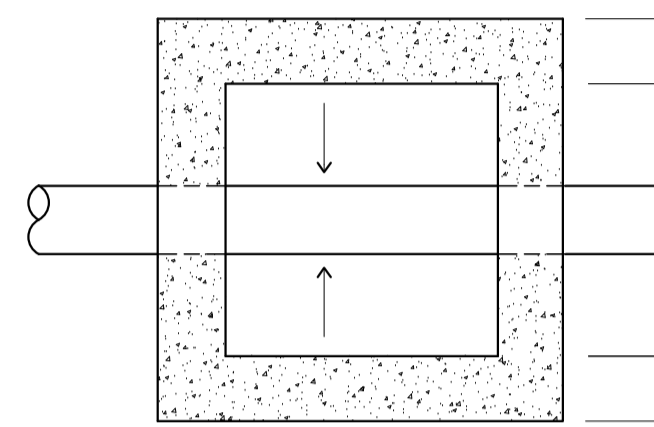
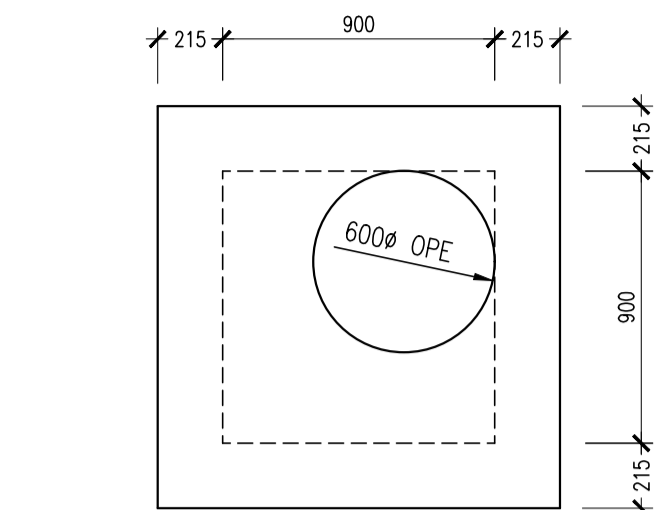
INLET DIA.mm	H MIN.mm
225	600
300	600
375	750
450	750
525	750
600	750
750	750



BACKDROP MANHOLE

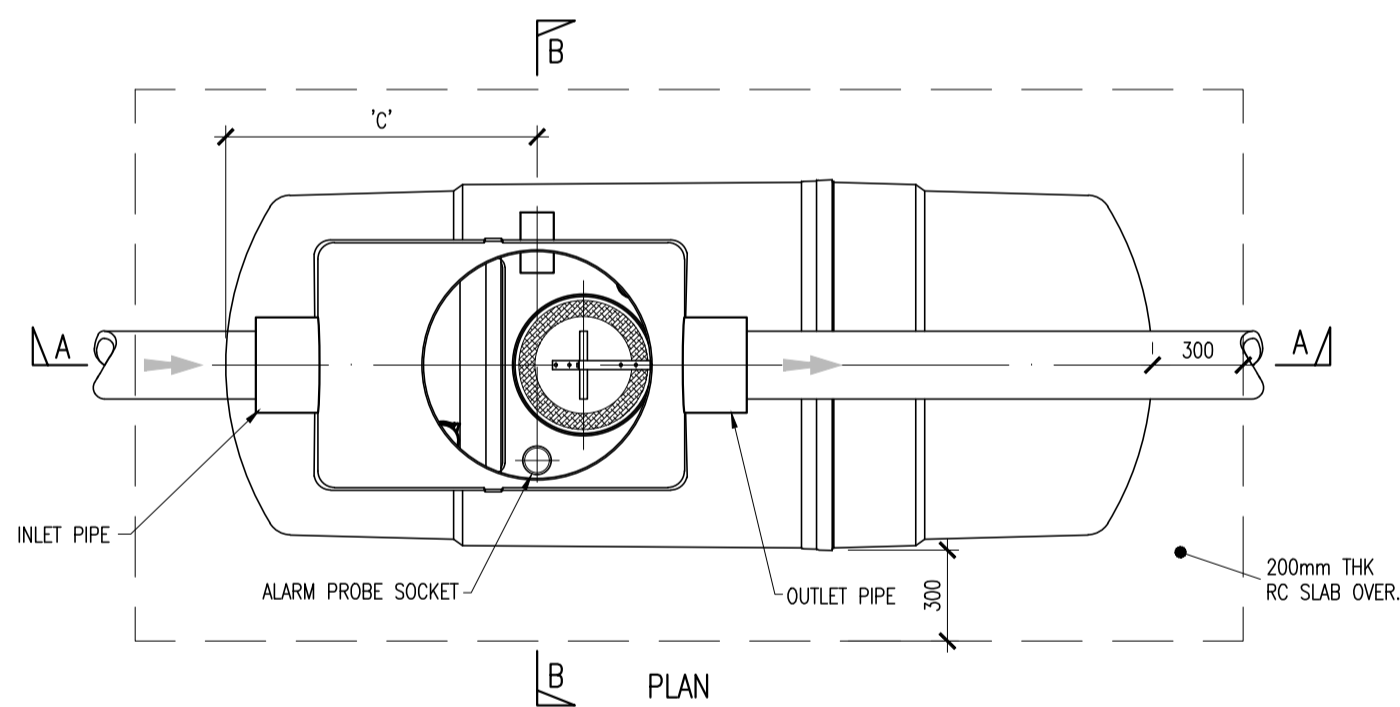


DEEP MANHOLE

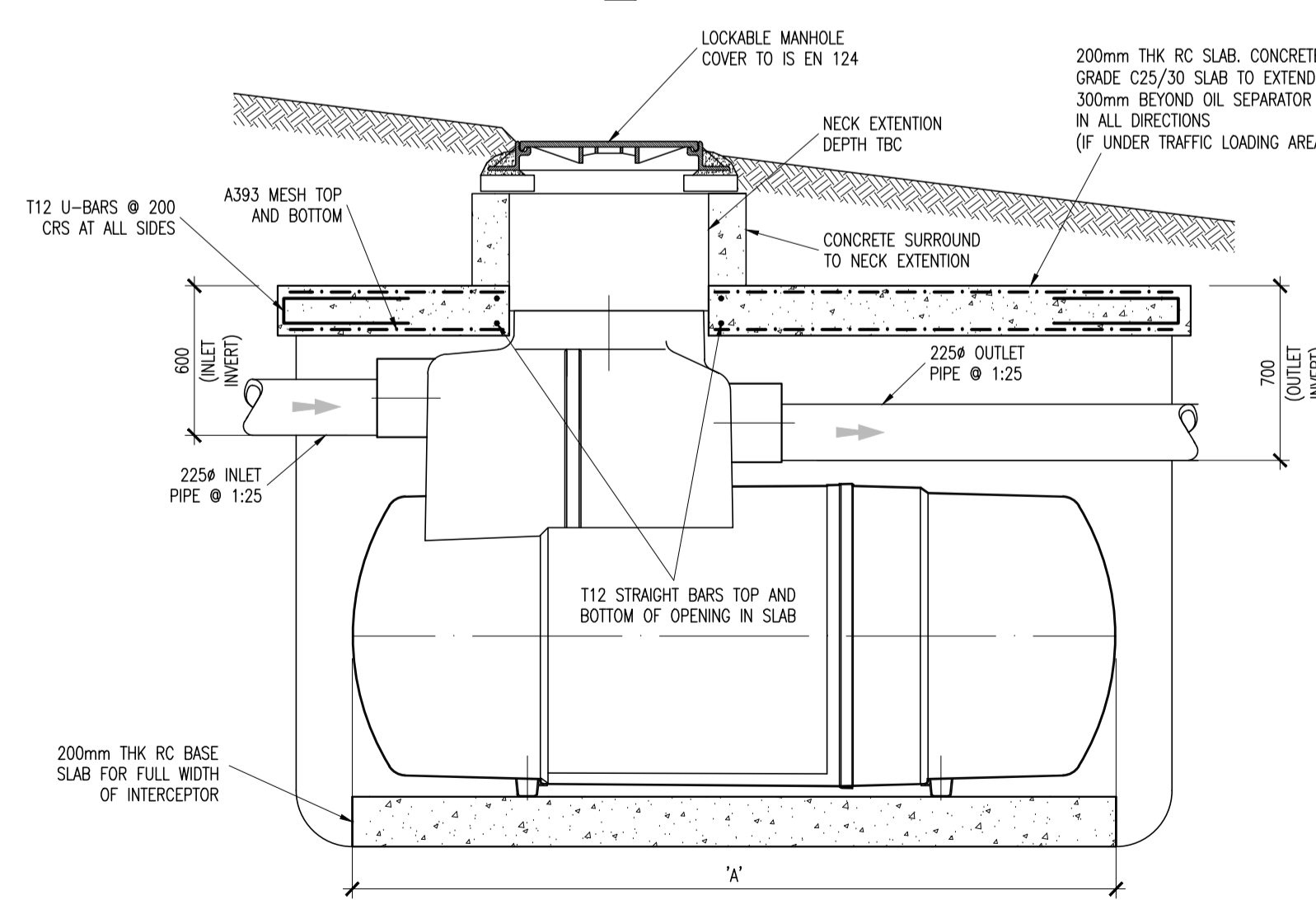


SHALLOW MANHOLE

PRIVATE DRAINAGE
[ALTERNATIVE IN-SITU REINFORCED CONCRETE MANHOLE DETAILS]
(STRUCTURAL ENGINEER TO PROVIDE CONSTRUCTION DETAILS)

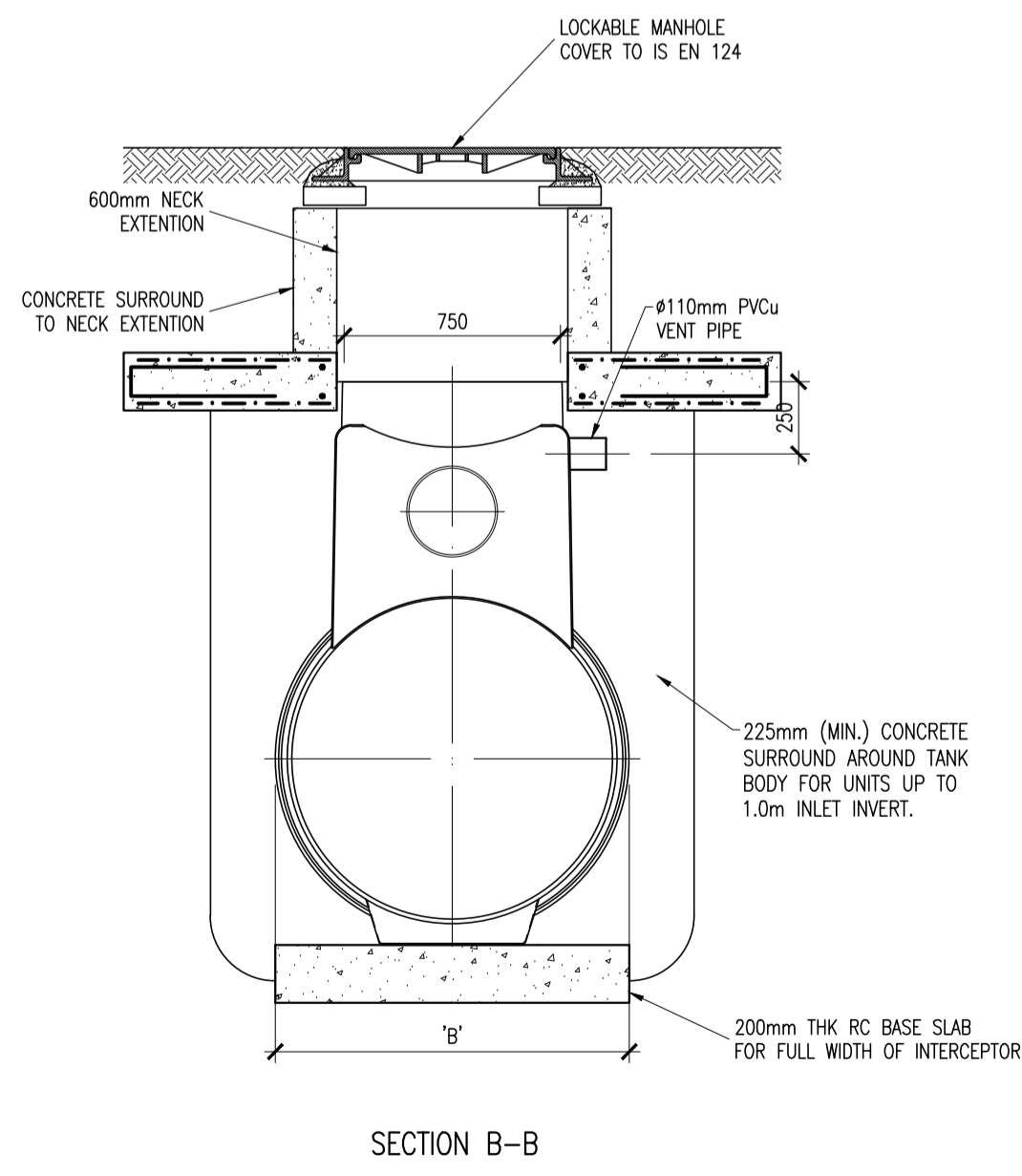


PLAN

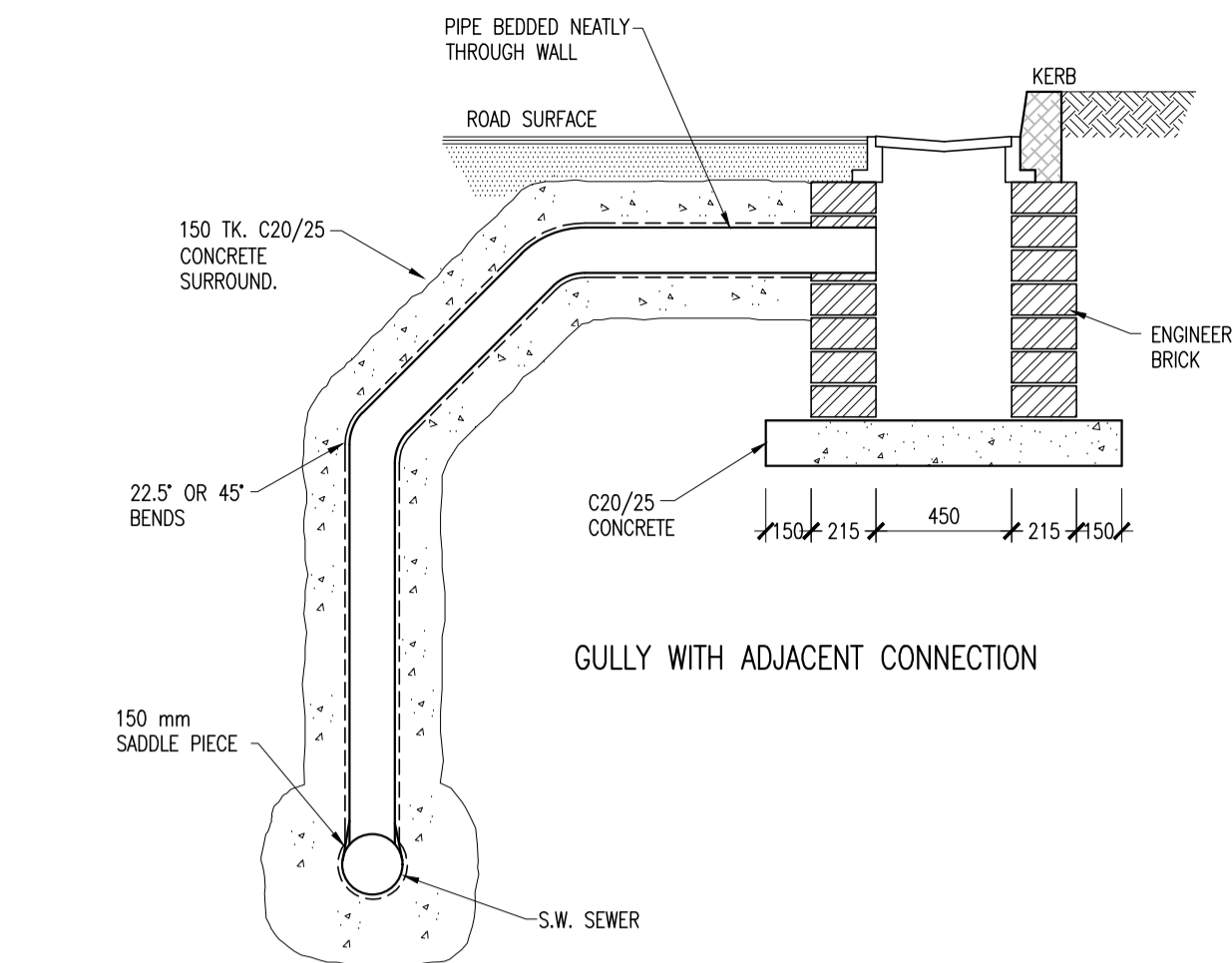


SECTION A-A

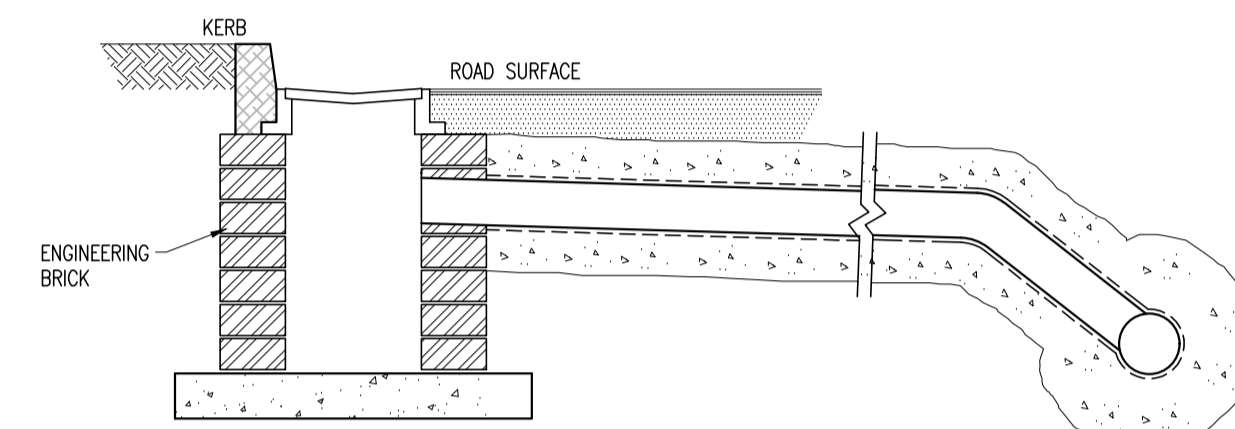
PETROL INTERCEPTOR DETAIL
SCALE 1:25



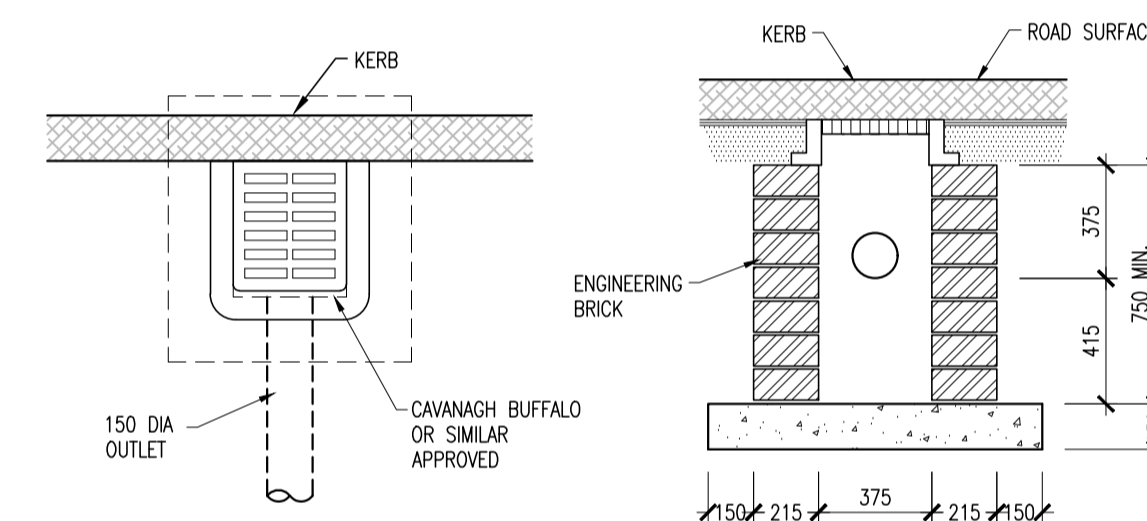
SECTION B-B



GULLY WITH ADJACENT CONNECTION



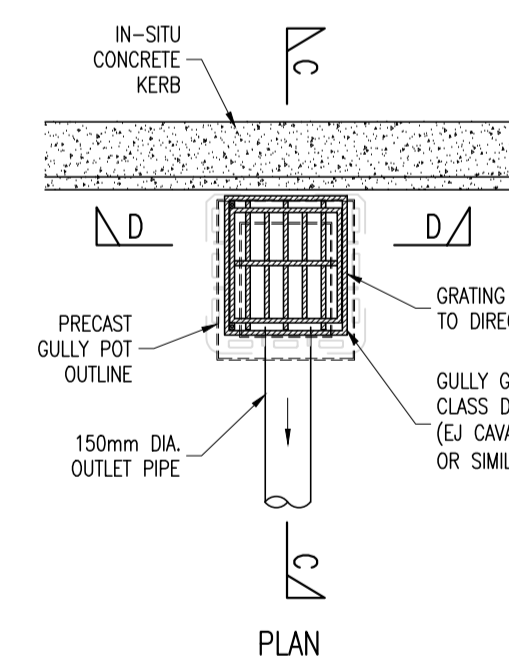
GULLY WITH CONNECTION ON OPPOSITE SIDE OF ROAD



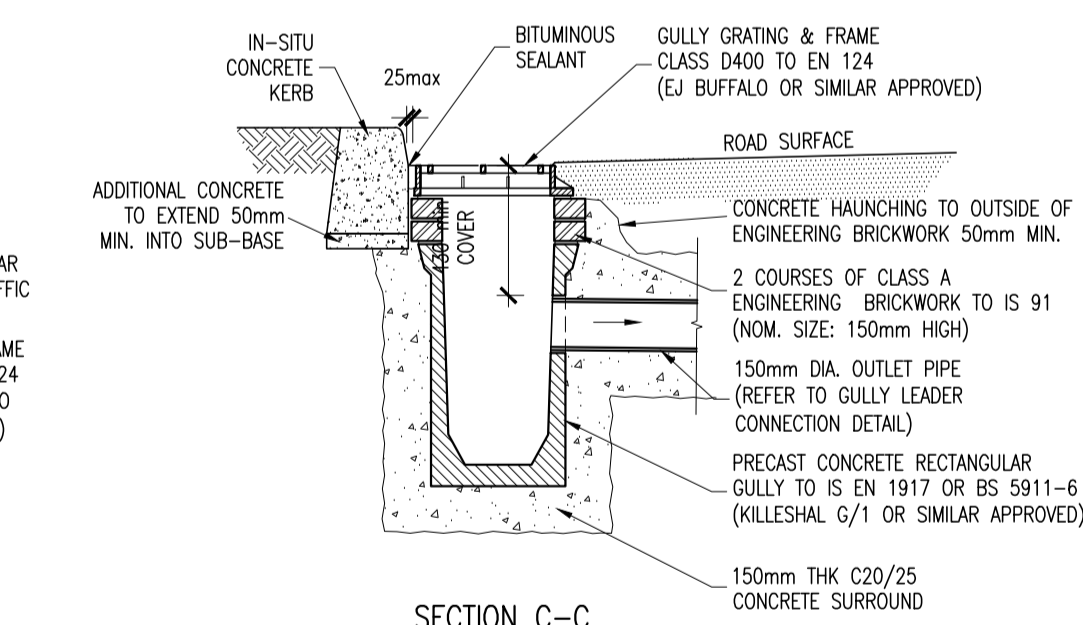
PLAN

SECTION

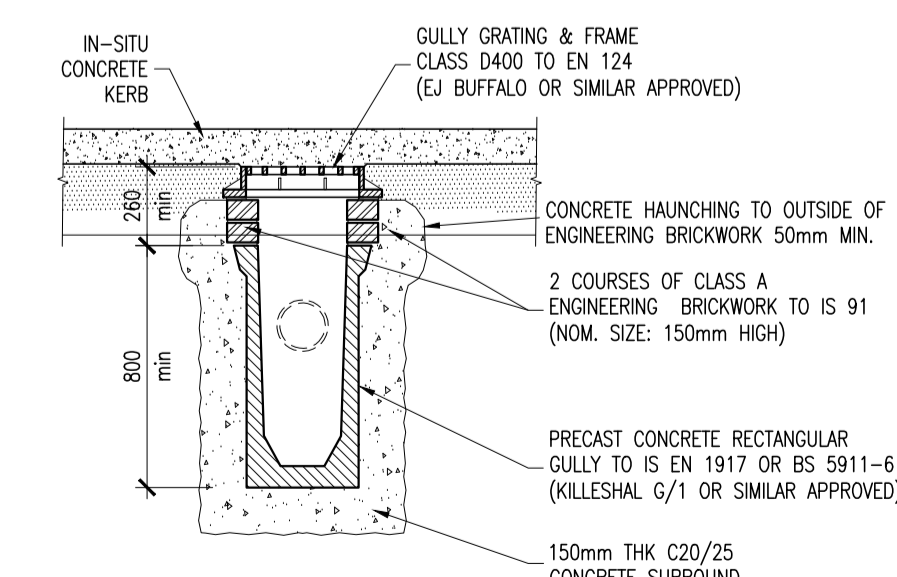
IN-SITU ROAD GULLY DETAILS



PLAN



SECTION C-C

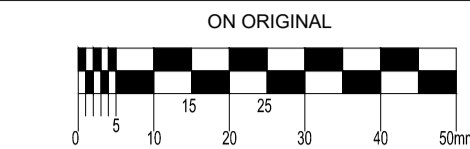


SECTION D-D

RECTANGULAR PRECAST ROAD GULLY DETAIL

© COPYRIGHT OF THIS DRAWING IS RESERVED BY DBFL CONSULTING ENGINEERS. NO PART SHALL BE REPRODUCED OR TRANSMITTED WITHOUT THEIR WRITTEN PERMISSION.

NO CHANGES OF WHATSOEVER NATURE ARE TO BE MADE TO ANY DETAILS SET OUT OR CONTAINED IN ANY DBFL SPECIFICATIONS OR DRAWINGS UNLESS THE EXPRESS CONSENT HAS BEEN OBTAINED IN ADVANCE, IN WRITING, FROM DBFL.



NOTES:

- C20/25 CONCRETE TO HAVE A MINIMUM CEMENT CONTENT OF 280kg/m³, MAXIMUM WATER/CEMENT RATIO OF 0.65 AND SLUMP CLASS S2.
- C25/30 CONCRETE TO HAVE A MINIMUM CEMENT CONTENT OF 280kg/m³, MAXIMUM WATER/CEMENT RATIO OF 0.65 AND SLUMP CLASS S2.
- C40/50 CONCRETE TO HAVE A MINIMUM CEMENT CONTENT OF 400kg/m³, MAXIMUM WATER/CEMENT RATIO OF 0.45 AND SLUMP CLASS S3.
- WHERE CLASS 6F1/6F2 CAPPING MATERIAL IS PROPOSED WITHIN 500mm OF CONCRETE OR STEEL, CLASS 6N TO BE USED INSTEAD.

NOTE:

- ALL WORKS & SPECIFICATIONS TO BE UNDERTAKEN IN ACCORDANCE WITH
- TII SPECIFICATION FOR ROADWORKS
- GREATER DUBLIN CODE OF PRACTICE FOR DRAINAGE WORKS
- RECOMMENDATIONS FOR SITE DEVELOPMENT WORKS

PO2	11/02/22	ISSUED FOR PLANNING	RSP	LMCL
PO1	15/06/21	ISSUED FOR PRE-PLANNING	KGO	LMCL
rev	date	description	by	chkd.
		A - Approved		
		B - Approved with comments		
		C - Do not use		

client approval

suitability S2 - INFORMATION issue purpose PLANNING

DBFL Consulting Engineers
Civil, Structural & Transportation Engineering
www.dbfl.ie

DUBLIN OFFICE: Ormond House, Upper Ormond Quay, Dublin 7, D07 W704
PHONE: +353 1 400 4000
CORK OFFICE: 14 South Mall, Cork, T12 CT91
PHONE: +353 (0) 21 2204538
WATERFORD OFFICE: Suite 10 The Arkun, Maratara Gate, Canada Street, Waterford, X91 W028
PHONE: +353 51 309 500

project ref.
PROPOSED RESIDENTIAL DEVELOPMENT, LUSK, COUNTY DUBLIN

drawing title
STANDARD DETAILS SHEET 3 OF 7

client
Dwyer Nolan Developments

designed by LMCL author KGO scale AS SHOWN sheet size A1

drawing no. 170006-DBFL-Z0-SP-DR-C-5004 revision P02