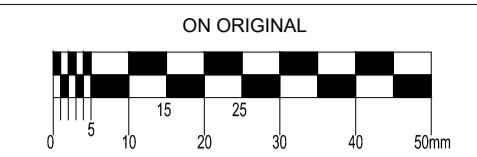
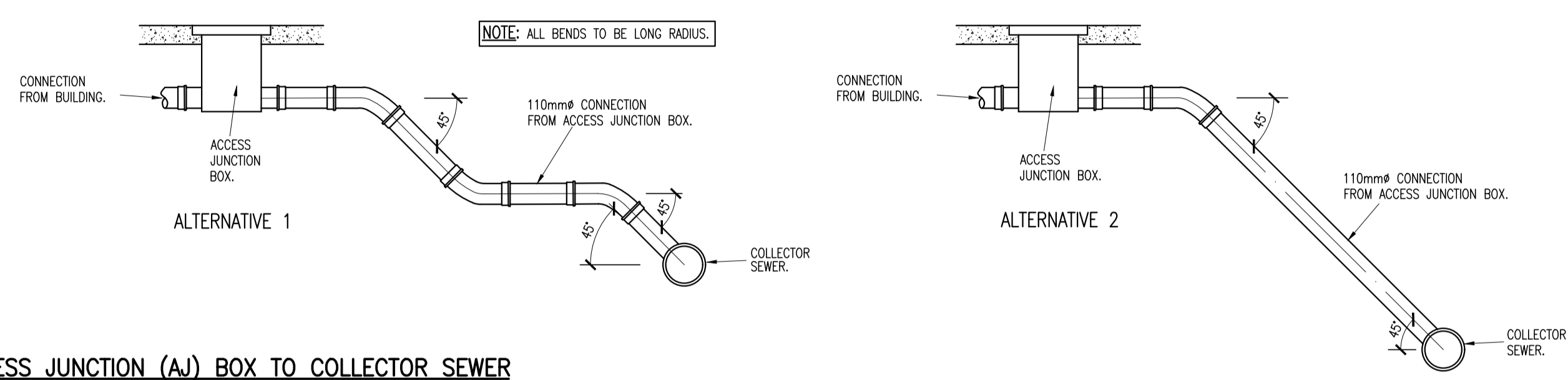
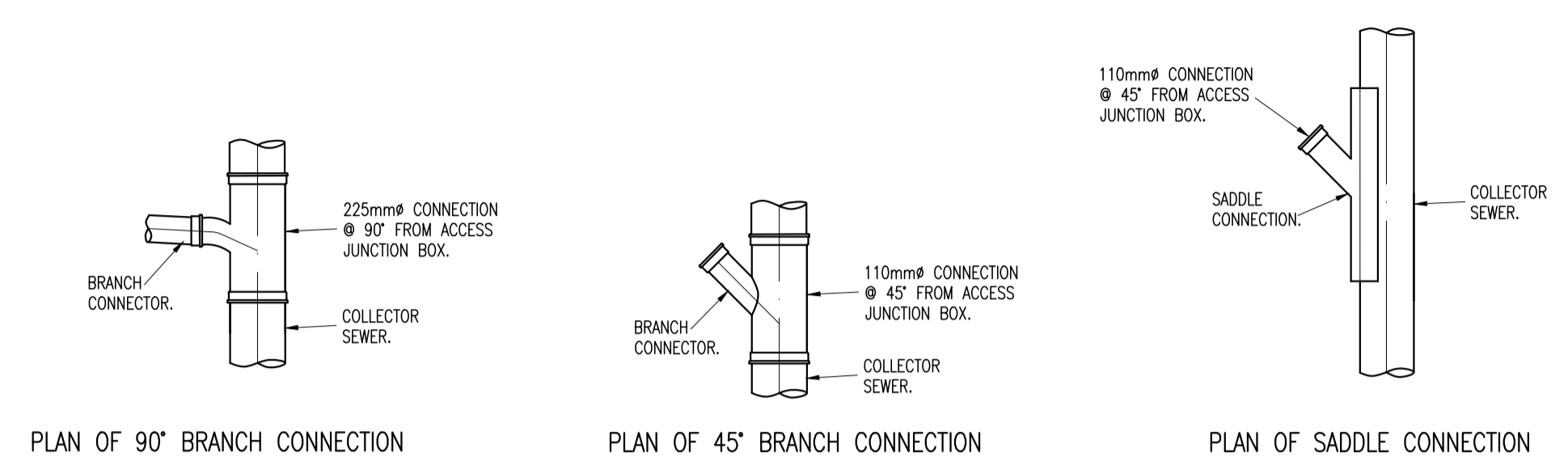


© COPYRIGHT OF THIS DRAWING IS RESERVED BY DBFL CONSULTING ENGINEERS. NO PART SHALL BE REPRODUCED OR TRANSMITTED WITHOUT THEIR WRITTEN PERMISSION.
 NO CHANGES OF WHATSOEVER NATURE ARE TO BE MADE TO ANY DETAILS SET OUT OR CONTAINED IN ANY DBFL SPECIFICATIONS OR DRAWINGS UNLESS THE EXPRESS CONSENT HAS BEEN OBTAINED IN ADVANCE, IN WRITING, FROM DBFL.

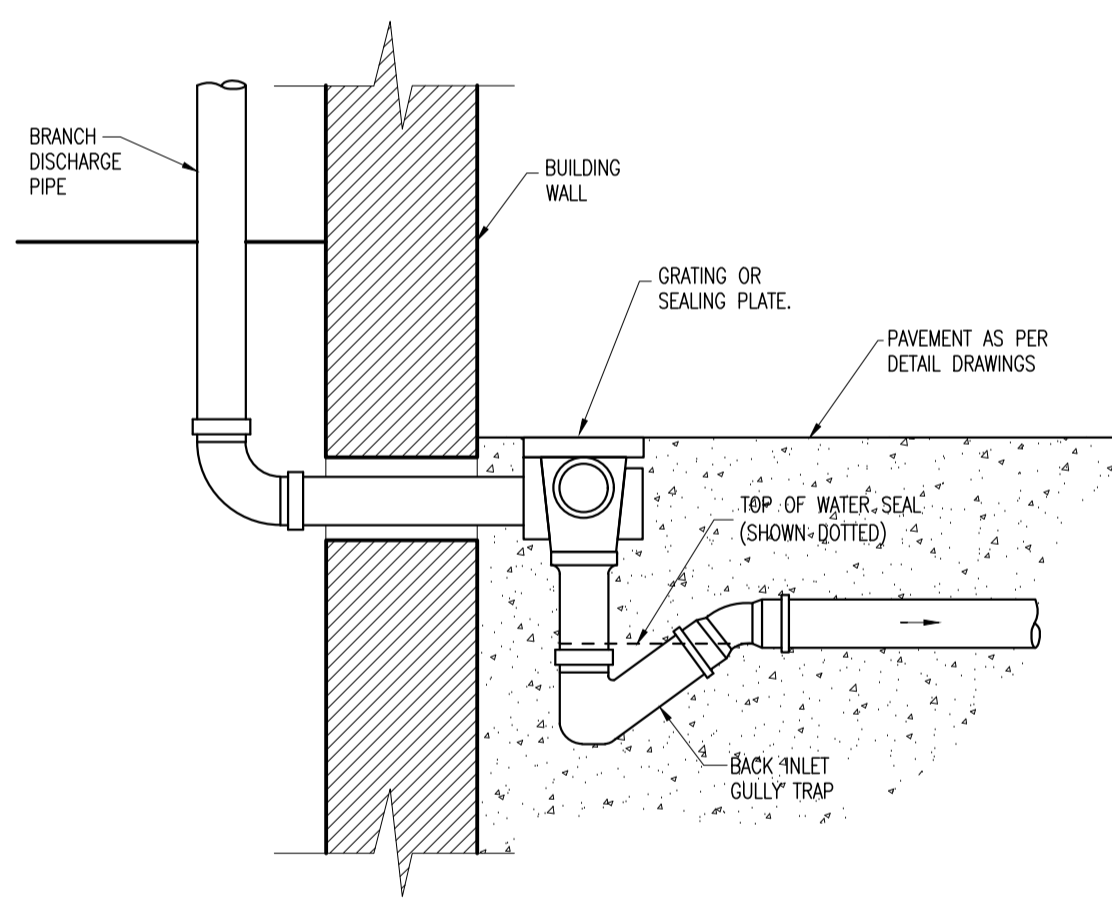


- NOTES:
- C20/25 CONCRETE TO HAVE A MINIMUM CEMENT CONTENT OF 260kg/m³, MAXIMUM WATER/CEMENT RATIO OF 0.65 AND SLUMP CLASS S2.
 - C25/30 CONCRETE TO HAVE A MINIMUM CEMENT CONTENT OF 280kg/m³, MAXIMUM WATER/CEMENT RATIO OF 0.65 AND SLUMP CLASS S2.
 - C40/50 CONCRETE TO HAVE A MINIMUM CEMENT CONTENT OF 400kg/m³, MAXIMUM WATER/CEMENT RATIO OF 0.45 AND SLUMP CLASS S3.
 - WHERE CLASS 6F1/6F2 CAPPING MATERIAL IS PROPOSED WITHIN 500mm OF CONCRETE OR STEEL, CLASS 6N TO BE USED INSTEAD.
 - WHERE FOOTPATHS ARE LOCATED ADJACENT TO ROADS, C40/50 CONCRETE TO BE USED. ALTERNATIVELY, FOOTPATHS LOCATED BEHIND VERGES C25/30 CONCRETE MAY BE USED.

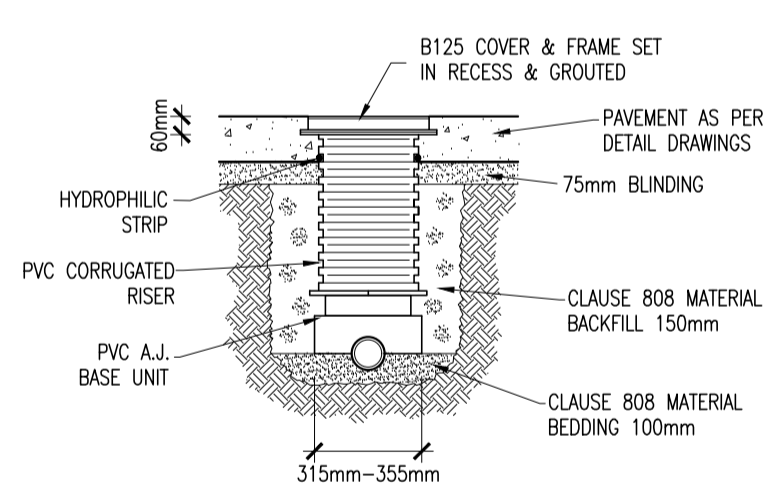
NOTE:
 ALL WORKS & SPECIFICATIONS TO BE UNDERTAKEN IN ACCORDANCE WITH:
 • TII SPECIFICATION FOR ROADWORKS
 • GREATER DUBLIN CODE OF PRACTICE FOR DRAINAGE WORKS
 • RECOMMENDATIONS FOR SITE DEVELOPMENT WORKS



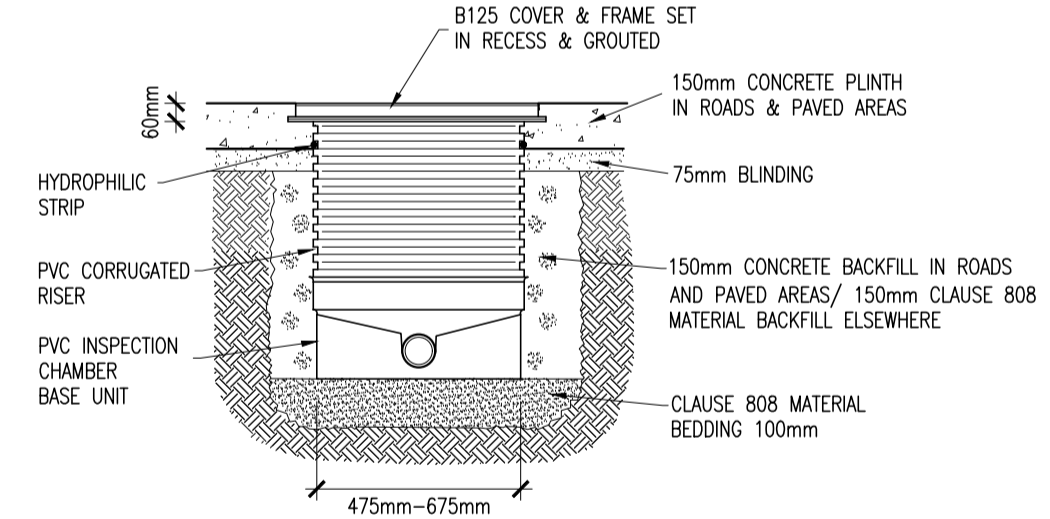
SADDLE CONNECTION FROM ACCESS JUNCTION (AJ) BOX TO COLLECTOR SEWER



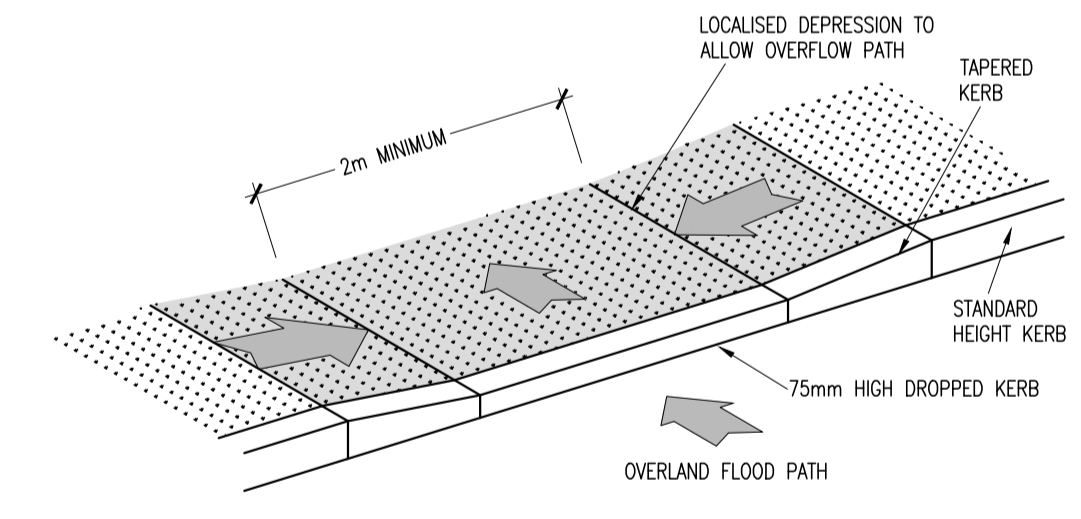
BACK INLET GULLY TRAP FOR FOUL CONNECTIONS



A.J. DETAIL



INSPECTION CHAMBER



DROPPED KERB (FOR OVERLAND FLOWPATH)

P02	11/02/22	ISSUED FOR PLANNING	RSP	LMCL
P01	15/06/21	ISSUED FOR PRE-PLANNING	KGO	LMCL
rev	date	description	by	chkd.
		A - Approved		
		B - Approved with comments		
		C - Do not use		

suitability S2 - INFORMATION issue purpose PLANNING

DBFL Consulting Engineers
 Civil, Structural & Transportation Engineering
 www.dbfl.ie

DUBLIN OFFICE: Ormond House, Upper Ormond Quay, Dublin 7, D07 W704
 PHONE: +353 1 400 4000
 CORK OFFICE: 14 South Mall, Cork, T12 CT91
 PHONE: +353 (0) 21 2204538
 WATERFORD OFFICE: Suite 10 The Arkun, Marzana Gate, Canada Street, Waterford, X91 W028
 PHONE: +353 51 309 500

project ref. PROPOSED RESIDENTIAL DEVELOPMENT, LUSK, COUNTY DUBLIN

drawing title STANDARD DETAILS SHEET 2 OF 7

client DWYER NOLAN DEVELOPMENTS

designed by	author	scale	sheet size
LMCL	KGO	AS SHOWN	A1
drawing no.		revision	
170006-DBFL-Z0-SP-DR-C-5003		P02	