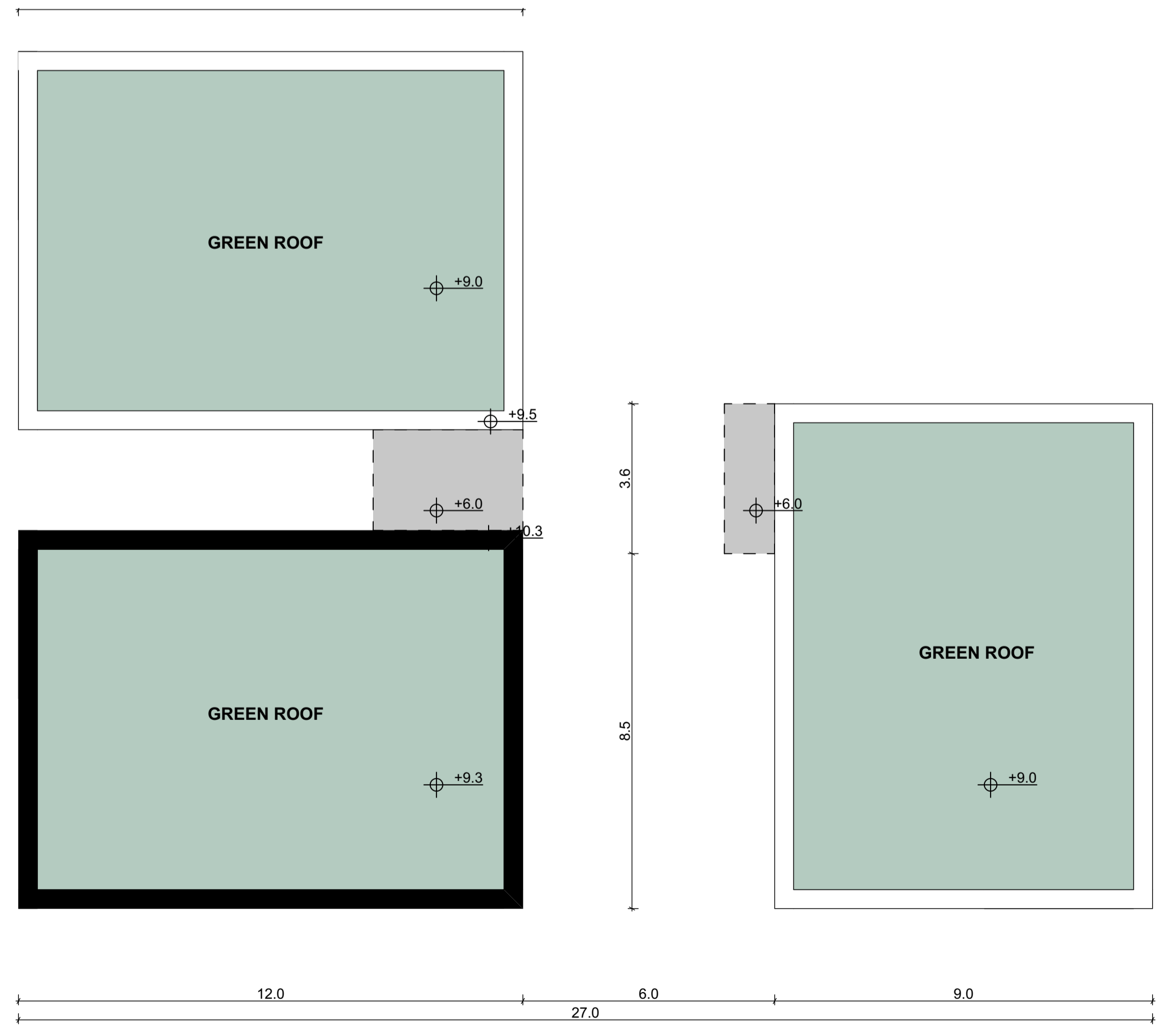




Second Floor Plan
SCALE 1:100



Roof plan
SCALE 1:100

Second Floor Plan	
APT166 2 Bed - 3 Person Apartment	
Room Name	Net Area
Balcony	6.0
Bath	4.5
Bedroom 1	15.3
Bedroom 2	7.5
Hall	6.5
Kitchen Dining Living	29.1
Store	9.0
Total Floor Area	87.9

Second Floor Plan	
APT169 2 Bed - 3 Person Apartment	
Room Name	Net Area
Balcony	6.0
Bath	5.0
Bedroom 1	15.1
Bedroom 2	7.5
Hall	6.8
Kitchen Dining Living	30.8
Store	8.6
Total Floor Area	87.9

Second Floor Plan	
APT172 - 2 Bed - 3 Person Apartment	
Room Name	Net Area
Balcony	6.0
Bath	5.0
Bedroom 1	12.6
Bedroom 2	8.8
Hall	5.4
Kitchen Dining Living	30.8
Store	10.5
Total Floor Area	87.9

Unit Number: 164,165,166,167,168,169,170,171,172

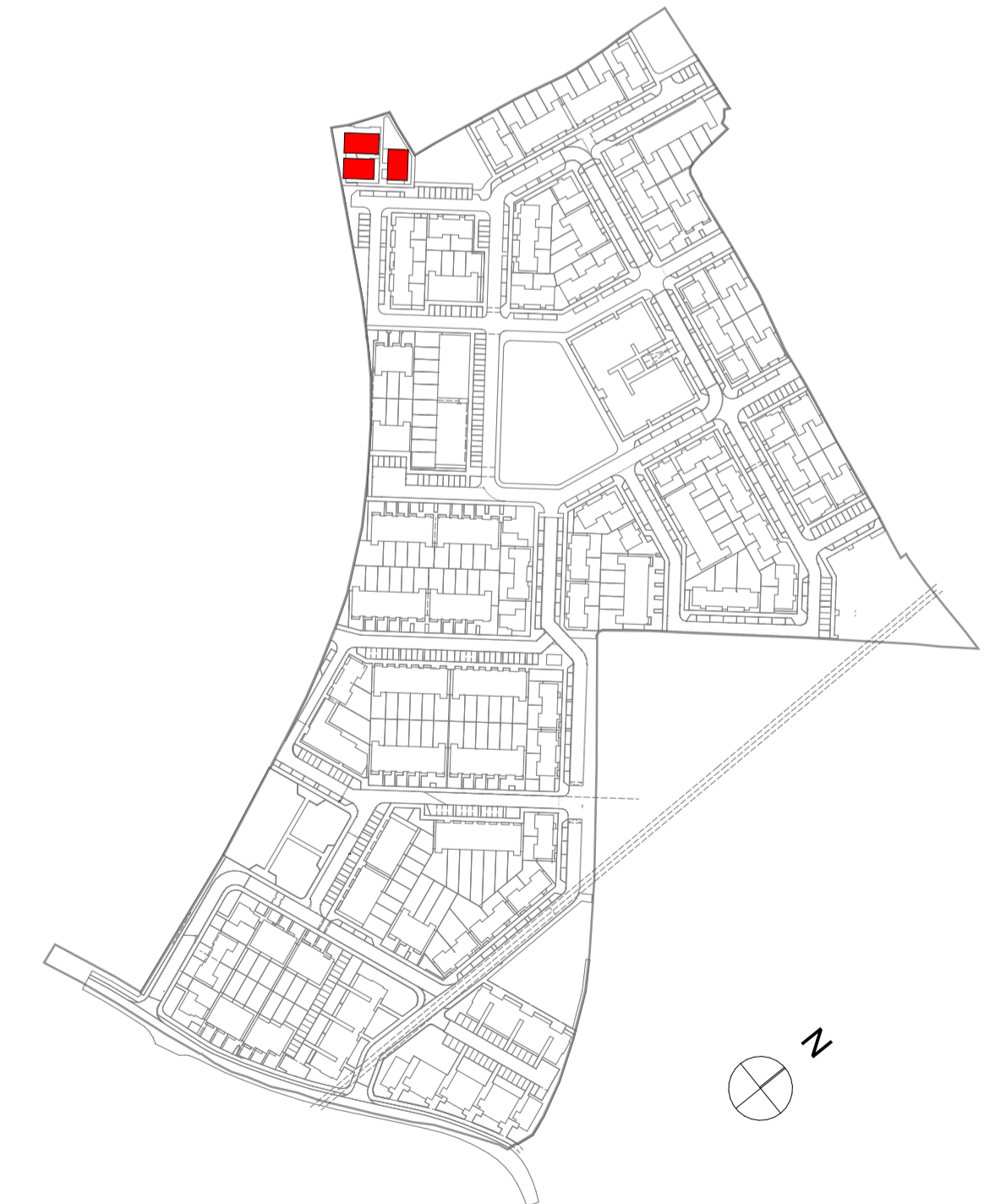
Refer to Site Plan for:
 - Finished floor levels to survey datum
 - Orientation
 - Handing of type for each unit

Notes

Do not scale from this drawing.
 Use figured dimensions only.
 All errors and omissions to be reported to the Architect.
 This drawing is to be read in conjunction with relevant consultant's drawings.

This drawing is for planning purposes only and not for construction.
 This drawing or design may not be reproduced without permission.

NOTES ON FINISHES:	
ROOF:	TO BE FINISHED IN SLATE OR CONCRETE ROOF TILES IN SELECTED COLOUR OR SIMILAR APPROVED
WALLS:	SELECTED CLAY BRICKWORK WHERE INDICATED OTHERWISE SELECTED SELF-COLOURED RENDER
JOINERY:	ALL WINDOWS AND DOORS, FRAMES AND LEAFS TO BE ALUMINIUM POWDER COATED TO APPROVED COLOUR OR UPVC OR PAINTED TIMBER TO APPROVED COLOUR. OBSCURE GLAZING WHERE INDICATED TO SENSITIVE WINDOWS.
RAINWATER GOODS:	GUTTERS, DOWNPIPES AND FIXINGS TO BE UPVC OR ALUMINIUM POWDER COATED TO SELECTED COLOUR TO MATCH ROOF SLATES.
SOLAR PANELS:	INDICATIVE SOLAR PANEL POSITION, FINAL SOLAR PANEL POSITION DEPENDS ON HOUSE ORIENTATION. THE SOLAR PANELS INDICATED ARE A PROVISIONAL OPTION TO SATISFY RENEWABLE ENERGY REQUIREMENTS OF BUILDING REGULATIONS PART L. SOLAR PANELS MAY BE OMITTED IN FAVOUR OF ALTERNATIVE RENEWABLE ENERGY OPTIONS.



KEY PLAN
N.T.S.