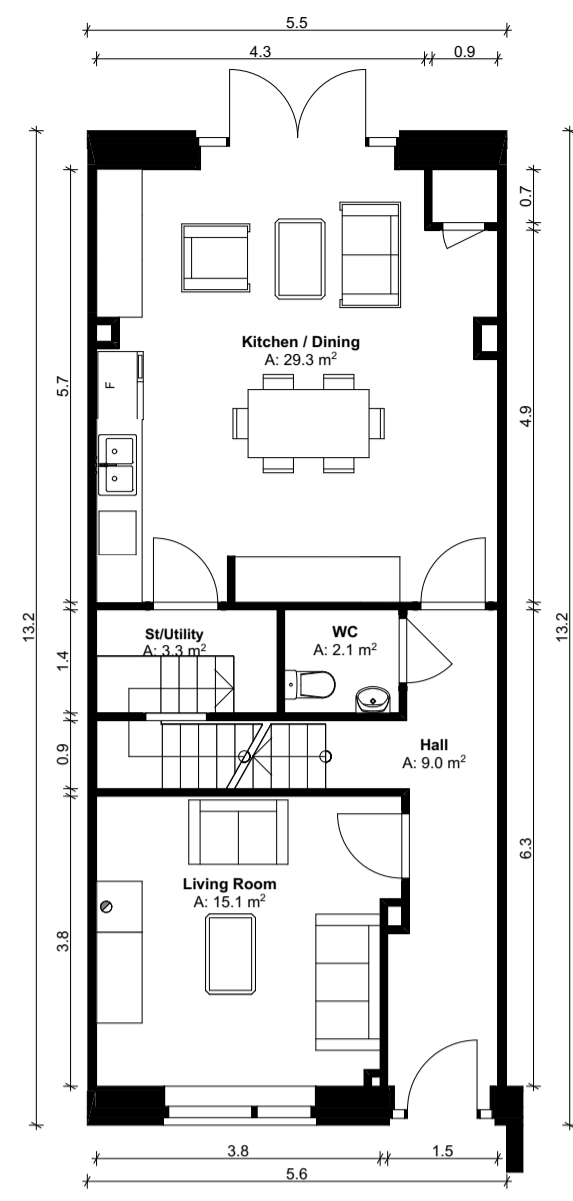


Notes

Do not scale from this drawing.  
Use figured dimensions only.  
All errors and omissions to be reported to the Architect.  
This drawing is to be read in conjunction with relevant consultant's drawings.  
All dimensions are in metres and all levels are in meters to match Datums unless otherwise noted.

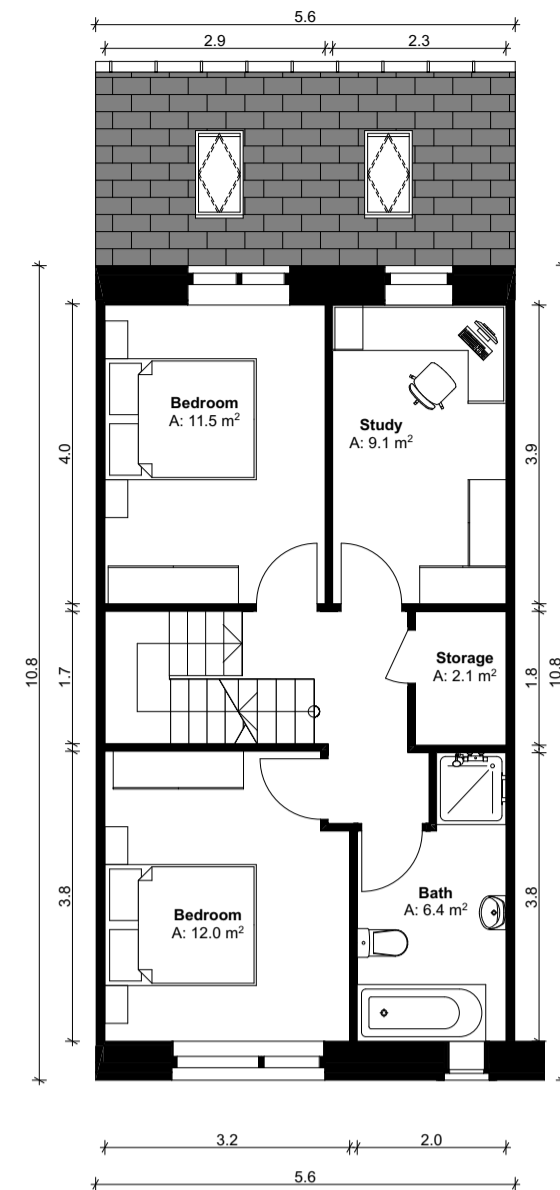
This drawing is for planning purposes only and not for construction.  
This drawing or design may not be reproduced without permission.

NOTES ON FINISHES:	
ROOF:	TO BE FINISHED IN SLATE OR CONCRETE ROOF TILES IN SELECTED COLOUR OR SIMILAR APPROVED
WALLS:	SELECTED CLAY BRICKWORK WHERE INDICATED OTHERWISE SELECTED SELF-COLOURED RENDER
JOINERY:	ALL WINDOWS AND DOORS, FRAMES AND LEAFS TO BE ALUMINIUM POWDER COATED TO APPROVED COLOUR OR UPVC OR PAINTED TIMBER TO APPROVED COLOUR. OBSCURE GLAZING WHERE INDICATED TO SENSITIVE WINDOWS.
RAINWATER GOODS:	GUTTERS, DOWNPIPES AND FIXINGS TO BE UPVC OR ALUMINIUM POWDER COATED TO SELECTED COLOUR TO MATCH ROOF SLATES.
SOLAR PANELS:	INDICATIVE SOLAR PANEL POSITION, FINAL SOLAR PANEL POSITION DEPENDS ON HOUSE ORIENTATION. THE SOLAR PANELS INDICATED ARE A PROVISIONAL OPTION TO SATISFY RENEWABLE ENERGY REQUIREMENTS OF BUILDING REGULATIONS PART L.  SOLAR PANELS MAY BE OMITTED IN FAVOUR OF ALTERNATIVE RENEWABLE ENERGY OPTIONS.

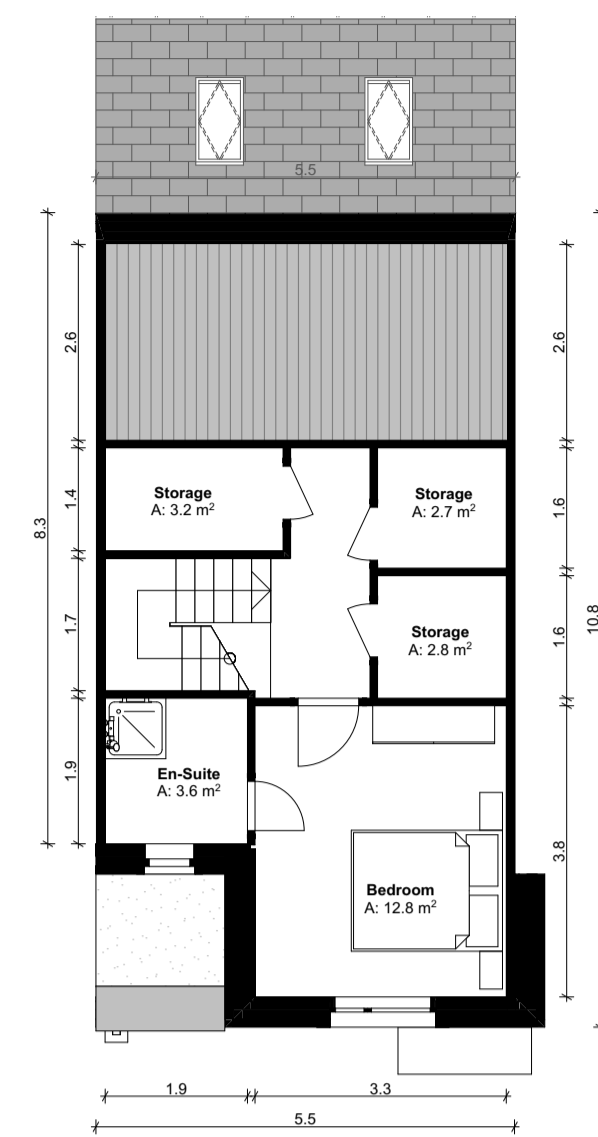


HOUSE TYPE A3 - 64.3M<sup>2</sup>

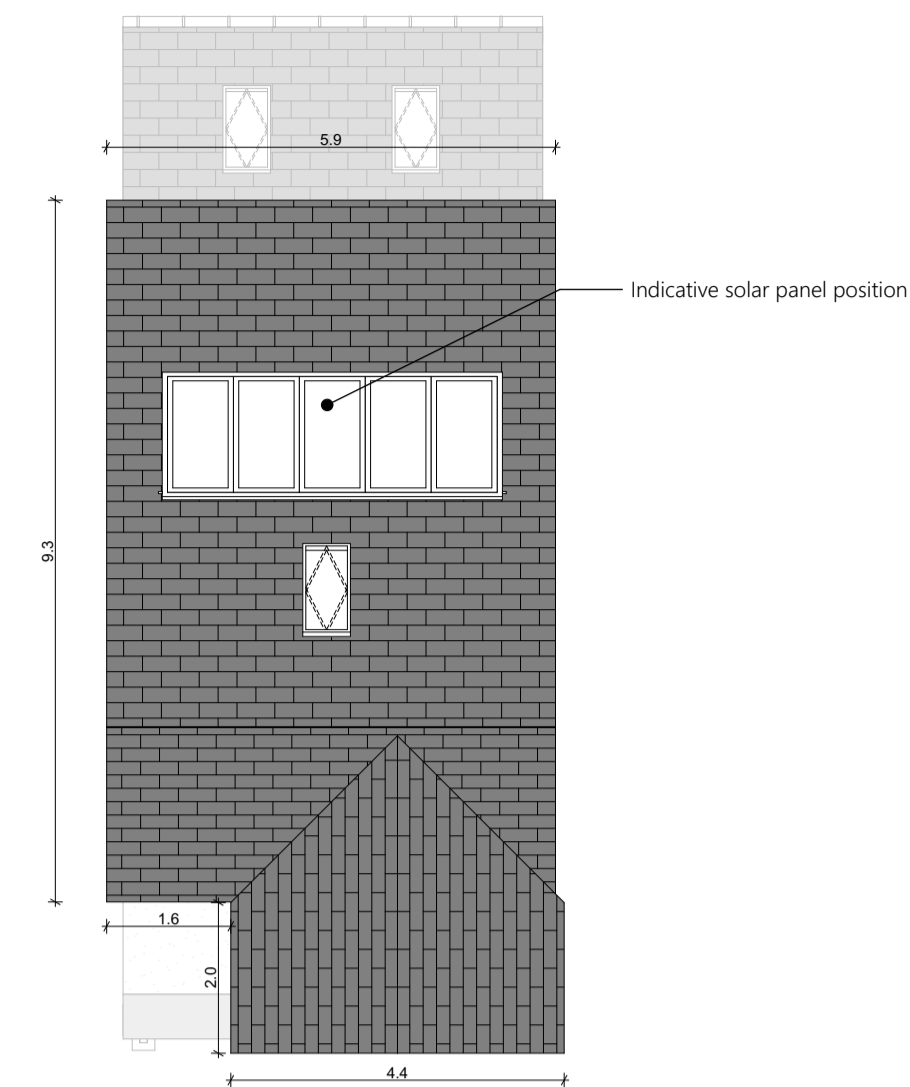
Ground Floor Plan  
SCALE 1:100



First Floor Plan  
SCALE 1:100



Second Floor Plan  
SCALE 1:100



Roof Plan  
SCALE 1:100



Front Elevation (South)  
SCALE 1:100



Typical Section  
SCALE 1:100



Rear Elevation  
SCALE 1:100



KEY PLAN  
N.T.S.

House Type -A3 Mid - 3B 6P- Gross Internal Area		
Area Type	Proposed Area	Dept. Of Housing Min. Areas
Ground Floor	64.3 m <sup>2</sup>	
First Floor	51.6m <sup>2</sup>	
Second Floor	34.1m <sup>2</sup>	
Grand Total	150.0 m <sup>2</sup>	110 m <sup>2</sup>

House Type -A3 Mid - 3B 6P-Space Provision & Room Sizes		
Area Type	Proposed Area	Dept. Of Housing Min. Areas
Aggregate Bedroom Area	45.4 m <sup>2</sup>	36.0 m <sup>2</sup>
Aggregate Living Area	44.1 m <sup>2</sup>	37 m <sup>2</sup>
Main Living Area	15.1 m <sup>2</sup>	15.0 m <sup>2</sup>

House Type -A3 Mid - 3B 6P- Storage Provision		
Area Type	Proposed Area	Dept. Of Housing Min. Areas
Storage	14.1 m <sup>2</sup>	6.0 m <sup>2</sup>

Refer to Site Plan for:  
- Finished floor levels to survey datum  
- Orientation  
- Handing of type for each unit

Unit Number: 61,62,142,143,144,147,148,149.